

# Table of Contents



Mission / Organizational Beliefs	1
Governing Board	2
Message from the Executive Director	3
About ACES	4
ACES At-A-Glance / The Connecticut RESC Alliance	5
Innovations in Schools	6
Innovations in Programs & Services	10
Innovations in the Workplace	13
Central Administration	16
2012-2013 Expenditures	17
2013-2014 Budgets	18
2012-2013 Service Recipients	19
Relationships and Funding	20
ACES Organizational Chart	21
Directory 2013-2014	22
ACES Member Districts	23

Area Cooperative Educational Services does not discriminate on the basis of race, color, age, ethnicity, national origin, religion, gender, marital status, disability or sexual orientation.

Copyright © 2013 Area Cooperative Educational Services – This publication is protected by copyright and all rights are reserved. No parts of this document may be reproduced or transmitted in any form or by any means, electronic or mechanical, for any purpose, without the express permission of Area Cooperative Educational Services.

Front Cover Photo Credit: Educational Center for the Arts, Thomas Edison Middle School, Mill Road School

Table of Contents Photo Credit: Whitney High School North, Village School



Educational Center for the Arts



Center for Autism Spectrum and Developmental Disorders

## Mission

The Mission of ACES, a leader and innovator in education, is to empower our students, member districts, and other clients to meet educational and life challenges in the changing global environment by providing collaborative, customized, cost effective solutions to meet identified needs of our educational community.

## Organizational Beliefs

- Each individual has inherent worth
- All individuals can learn
- High expectations and effort are essential for higher achievement
- Quality education provides the foundation for the success of the individual and the community
- Diversity strengthens an organization
- Individuals are accountable for their actions
- Everyone has a responsibility to each other and to contribute to the common good
- Honesty and respect are essential for building trusting relationships
- A positive attitude enhances performance
- Collaboration enhances productivity and generates creativity
- Families are essential partners in education
- The willingness to change is necessary for individuals to grow and organizations to thrive

# Governing Board



SCHOOL DISTRICT	MEMBER	OFFICE
Ansonia	Fran DiGiorgi	
Bethany	Janet Finneran	Fiscal Officer
Branford	Judith Hotz	Executive Committee
Cheshire	Stephen Mrowka	
Derby	Ken Marcucio	
East Haven	Vacant	
Hamden	Michael Dolan	
Meriden	John Lineen Jr.	Executive Committee
Middletown	Gene Nocera, Ph.D.	
Milford	Early Whiskeyman	
Naugatuck	James Scully	
New Haven	Vacant	
North Branford	Anthony Ferraiolo	
North Haven	Alicia Clapp	Chair
Orange	Vacant	
Oxford	Paula Guillet	
Regional District #5 (Amity)	Sue Cohen	Vice Chair
Regional District #13 (Durham, Middlefield)	Norm Hicks	Executive Committee
Regional District #16 (Prospect, Beacon Falls)	Vacant	
Seymour	Ed Strumello	
Wallingford	Kathy Castelli	
Waterbury	Elizabeth Brown	
West Haven	Vacant	
Wolcott	Roberta Leonard	
Woodbridge	David Bernard	

# Message from the Executive Director



Greetings:

As Executive Director of Area Cooperative Educational Services (ACES), I am proud to present the 2012 – 2013 Annual Report, *ACES Innovations*. Innovation has been defined as creating something new – a new method, idea or device. As you read through this report, you will learn about a variety of initiatives that were created to improve the way we learn, teach, and live. ACES innovations are illustrated by our *Scratch Project*, a collaboration between Wintergreen Interdistrict Magnet School and Village School, the ACES Business Advisory Council, a partnership between ACES staff and business leaders that supports career and vocational education and experiences for ACES students and clients, and the employees who contributed to and celebrated ACES as a Top Workplace.

ACES innovations are driven by our mission and organizational beliefs and guided by our key strategic objectives:

- To have all **ACES learners demonstrate continuous growth** – educationally, socially and emotionally through identified goals and rigorous standards utilizing multiple measurements of assessment
- To be a **leader, advocate, innovator and visionary** in collaborating with school districts and communities to transform education in the 21st century
- To sustain the existence of **fiscally healthy and high-quality** ACES programs, schools and services.

We live in a climate of change. Each and every year we as an agency must embrace that change and be creative to meet the challenges of our districts and our students. I thank our 25-member districts and their Board representatives for another productive year, especially, the 16,000 educators who participated in professional development activities at our Hamden facility, the 2,200 families who became active members of the ACES community and sent their children to our magnet and special education schools, the 502 students, 14 districts and 66 schools that participated in ACES Open Choice program, the 19 districts and more than 150 educators who are part of ACES Curriculum Consortium, the 111 families served by the ACES - Middlesex County Early Head Start Partnership, and the 70 companies who work with us to prepare our students and clients for the workforce. We are grateful to all of our stakeholders for their innumerable contributions, ongoing support, and significant participation.

As you read through *ACES Innovations*, I hope that you will recognize ACES as your primary resource for assisting you in improving education for all students.

Sincerely,

A handwritten signature in black ink that reads "Craig W. Edmondson". The signature is written in a cursive, flowing style with a long horizontal flourish at the end.

Craig W. Edmondson, Ed.D. Executive Director

# About ACES



Mill Road School



Thomas Edison Middle School

Area Cooperative Educational Services (ACES) is the Regional Educational Service Center for the twenty-five school districts in south central Connecticut. We exist to improve public education through high quality, cost effective programs and services. Over 40 states operate Educational Service Agencies because of the educational and financial benefits that are obtained through regional collaboration.

We meet the educational needs of our member districts by acting as both a local education agency (LEA) and as a regional educational service center (RESA). As a Local Education Agency, we operate schools designed to meet the specific needs of the region, currently special education and the Interdistrict magnet schools.

As a regional service agency, we develop solutions to the most pressing needs of our member school districts. From school-based technical assistance to programs that advance the education workforce, we work hand in hand with state officials and local educators to improve the quality of teaching and learning.

Our revenue sources include tuition and fees for services from local education agencies, state and federal funds, and private sources, including grants and fees for services. Local school districts appoint a representative to the ACES Governing Board and work collectively to set a strategic direction for the organization based on the educational needs of the region.

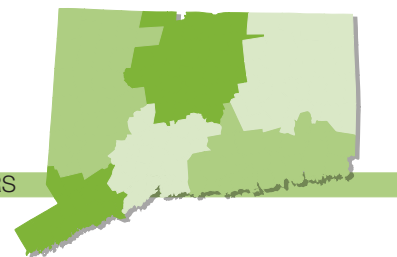
## ACES At-A-Glance



Total Number of Students Served		Total Number of Educators Served at ACES Conference Center	
2,200		16,000	
Total Number of Employees	Total Number of Facilities	Total Number of Programs & Services	
920	15	72	
Total Number of Districts within ACES Region	Total Number of Communities Served by ACES	Total Number of Schools	
25	58	8	

## the RESC Alliance

CONNECTICUT ALLIANCE OF REGIONAL SERVICE CENTERS



## The Connecticut RESC Alliance

ACES is one of six regional educational service centers (RESCs) in Connecticut. All RESCs support the instructional and operational components of Connecticut school districts. The RESC Alliance works collaboratively to develop and deliver high-quality, cost-effective collaborative programs and initiatives.

For additional information on the RESC Alliance, go to [www.rescalliance.org](http://www.rescalliance.org).



# ACES Innovations in Schools



Thomas Edison Middle School



Wintergreen Interdistrict Magnet School

As a Local Education Agency, ACES operates 8 schools and a number of educational programs serving the needs of member school districts across the region. The two primary district needs that we address in our schools are: a) issues of academic achievement stemming from racial, ethnic and the economic isolation; and b) educating students whose disabilities pose challenges that exceed the capacity of local districts. In response, ACES provides rigorous academic curricula through three Interdistrict Magnet Schools enrolling over 1,600 students, and five special education schools enrolling close to 600 students.

## Interdistrict Magnet Schools

**ACES Educational Center for the Arts (ECA)** is the oldest of ACES three magnet schools. This half-day program serves over 300 9th – 12th grade students who are highly motivated in the visual, music, dance, theatre and literary arts. Students attend ECA in the afternoon to work with professional artists. They earn honor-level credit at their home high school for their work at ECA. The school is located in the Audubon Arts District in New Haven.

**ACES Thomas Edison Middle School (TEMS)** serves over 700 sixth, seventh and eighth grade students from its partner districts, Meriden, Middletown and Regional District #13 and participating districts including Hamden, New Britain, North Haven, Wallingford, and Waterbury. TEMS focuses on Math, Science and Technology through a hands-on exploratory method of learning.

**ACES Wintergreen Interdistrict Magnet School (WIMS)** provides a comprehensive liberal arts education to over 600 Kindergarten through eighth grade students. Hamden, Meriden, New Haven, Wallingford and Woodbridge are WIMS partner districts. WIMS also enrolls students from many communities through ACES Magnet School Parent Choice program. WIMS focuses on educating the whole child through inquiry, innovation, and the arts in a diverse, compassionate, and mindful learning community.



# The Scratch Project

## A Collaboration between Students at ACES Wintergreen Interdistrict Magnet School and ACES Village School

The Scratch project was a collaboration between ACES Wintergreen Interdistrict Magnet School (WIMS) in Hamden and ACES Village School, a Pre-K – 8th grade special education school in North Haven. It aimed to promote the use of digital media and foster a connection between students at the two schools. A team of WIMS students used the MIT-developed programming language, Scratch to create educational video games expressly designed to meet the individual needs and interests of their Village School peers. An initial face-to-face meeting provided an opportunity for the WIMS and Village School students to get acquainted and for the WIMS students to learn about their Village School friends' interests and school curriculum. These facts were used to help the WIMS students create their personalized learning activities. The Scratch project culminated with the students meeting again for the launch of the games at Village School on April 19, 2013.

The games are available online at <http://scratch.mit.edu/users/acesSchools>.

*"The Scratch Project has really demonstrated the power of technology. Students from both schools benefitted in many ways. The students at Village were so excited to meet their designers from WIMS. The outcome was a new relationship among students and the knowledge that even though we have our differing abilities, relationships and connections among our schools can be created. Through these relationships we learn about each other, ourselves and the world."*

- Carol Bunk, principal, Village School



# ACES Innovations in Schools



Whitney High School East / West



Village School

## Special Education Schools

**ACES Center for Autism Spectrum & Developmental Disorders** is an educational program serving close to 40 students ages 11 – 21 from 21 districts from throughout Connecticut. The Center serves students with Autism Spectrum and Developmental Disorders. The primary goal of the program is to provide science-based instruction, training, and behavior intervention programs that promote functional independence.

**ACES Mill Road School** is a K-8 school which encompasses two programs: The Mill Road Program and the Urban Youth Elementary Program. The Mill Road Program serves children K-8th grade with serious social, emotional and behavioral difficulties, including students on the autism spectrum. The New Haven Urban Youth Elementary Program, a combined regular K – 5th grade and special education program, services students with emotional, educational and social issues in an integrated environment.

**ACES Whitney High School East & West** provides services for a diverse student population between the ages of 14 and 21. The special educational program provides students with all of the necessary supports in order to enhance students' ability to develop in the areas of academics, communication, life skills, vocational/employment, social skills, transition and more.

**ACES Whitney High School North** provides a positive, individualized, and multifaceted learning environment which allows students with serious emotional disabilities, grades 9-12, to maximize both their capabilities and potential for happiness and well-being. The program goals include improving social skills, cognitive skills, vocational skills, communication systems, student/family support systems, and life skills, as well as facilitating access to community resources.

**ACES Village School** consists of three units: Early Childhood, Early Intensive Behavior Intervention for students on the autism spectrum, and Elementary/Middle School Programs. The Early Childhood unit includes opportunities for integration with typical peers. ACES Village School provides extensive services to children ages 3-14 with a wide range of abilities and complex needs. Related services include speech, physical and occupational therapies, social services, behavioral services, adaptive physical education, music therapy and nursing services.

# ACES Business Advisory Council

## Building Relationships that Last

Established in 1997, the ACES Business Advisory Council works with ACES staff to provide employment and vocational training opportunities for students and clients in ACES ACCESS Program, Whitney High School East / West, and Whitney High School North. The ACES Business Advisory Council is a diverse group of business professionals from the greater New Haven region. Its mission is to enhance employment opportunities for ACES student and adult special needs populations. In 2012 - 2013, 70 companies and organizations provided employment and training opportunities to ACES students and clients.



ACES Business Advisory Council, October 2012



Whitney High School East – West Students, Anthony Earl and Robert Smith-McDermott with ACES Whitney High School East Teacher and ACES 2013 Teacher of the Year, Tom Igoe

# ACES Innovations in Programs & Services

As a Regional Educational Service Center (RESOC), ACES is committed to developing solutions to the most pressing educational needs of the region and state. By leveraging strong local relationships with a broad state-wide network of resources, ACES delivers high quality, cost efficient services to our member districts.

## School Improvement Services

**ACES Professional Development and School Improvement (PDSI)** provides districts with high-quality programs, services, resources and technical assistance in order to build staff capacity to meet the learning needs of their students. Through consultation, facilitation and professional development services, PDSI collaborates with districts to meet their specific needs, in regional and customized formats. The PDSI team brings an innovative approach to its work with educators, with proven expertise in areas such as: curriculum design and implementation, content and pedagogy, assessment, instructional technology, evaluation and supervision, leadership development and strategic planning.

### Early Learning Matters: ACES – Middlesex County Early Head Start Partnership

**ACES Early Childhood Services** directs the **ACES - Middlesex County Early Head Start Partnership** which services income-eligible expectant families or families with infants and toddlers through age three in Middletown, Portland, Cromwell, Old Saybrook, Westbrook and Clinton. Now in its fourth year of federal funding, the ACES - Middlesex County Early Head Start Partnership served 115 children, 111 families and 58 expectant mothers this past year. Community partners include the Middletown Public Schools, Middletown Adult Education, Middlesex Hospital Family Advocacy Program, CT Birth to Three, CT Department of Children and Families, CT Dental Health Partnership, Injury Free Kids, and the Wesleyan University Center for Community Partnerships (partial list).



ACES – Middlesex County Early Head Start Partnership Program Participants

**ACES Early Childhood Services** directs the ACES – Middlesex County Early Head Start Program, and offers high quality competency-based interdisciplinary consultation and training to early childhood practitioners and supports the design and implementation of early childhood experiences in both regular and special education settings. Our Interdisciplinary Consultation Team also provides child-specific interventions in ECE settings for children Birth to Five. Through regional collaboration, we are able to respond to community needs, share best practices, prepare a more qualified workforce, and maximize resources.

## Specialized Services

**ACES Behavior Services** provides Applied Behavior Analysis (ABA) services for ACES school programs, school districts, organizations, and families. Our highly experienced Board Certified Behavior Analysts work with children, adolescents and adults. We combine the most current, methodology in the ABA field to design teaching and clinical solutions. Students are taught to achieve goals in the areas of social, behavioral, academic, and language development.

**ACES Extension Therapy Services** provides contractual occupational therapy and physical therapy services to member school districts and local private schools. Services are provided as a related service when deemed necessary for a special education student to participate in his and/or her educational curriculum and also to provide, as requested by the LEA or school, support to the general education curriculum.

**ACES Technology Services** provides support and database services to districts ranging from highly technical infrastructure issues through desktop support helpdesk services. These services are provided through a collaborative model in which districts are fully engaged in the decisions and technological directions which affect their students and teachers.

**ACES Transportation Services** provides transportation for students and adults to and from ACES facilities as a contractual service to our local school districts and agencies.



## Regional Educational Programming

**ACES Open Choice**, established in 1998, provides options for families to participate in a lottery for available school and grade placements in New Haven and suburban schools. In 2012-13, over 500 students, 14 school districts and 66 schools in the ACES region participated in this program. Student grants are provided by CSDE to districts which enroll Open Choice students. ACES provides registration, enrollment, support and family/school liaison services to participating families and schools.

**ACES Magnet School Parent Choice** coordinated by ACES Program Development for the ACES region. In 2012 – 2013, 42 new students applied for seats in TEMS and WIMS. Of those, 20 were added by lottery system to the prior enrollment of 54 students from non-partner school districts.

**ACES Interdistrict Grant Programs** support students in over 27 districts. During 2012-13, ACES coordinated seven programs funded by the Connecticut State Department of Education's Interdistrict Cooperative Grant Program. These programs foster academic improvement and a greater understanding of diversity by connecting students from multiple districts through face-to-face interactions with each other for academic and cultural experiences led by certified staff and experts in a variety of fields.

**ACES - West Haven High School Collaborative** provides educational services to students identified with Intellectual Disabilities at West Haven High School. Daily programming includes academic, vocational, and social skills instruction.

**ACES School Program at Yale New Haven Hospital, St. Raphael Campus** fills a critical gap in the hospital's inpatient mental health services for school age children. The program keeps students in the care of the hospital's Children's Psychiatric Emergency Services (CPES) on pace academically. The program supports the transition of students in and out of the hospital by serving as a liaison between the family, school, and CPES. Daily group and individualized instruction are delivered by a certified special education teacher.

**ACES ACCESS** supports the career development and transition for a multi-challenged adult population (ages 21 and above). The program provides vocational training and support to adults with disabilities in Greater New Haven in the areas of Individual Employment, Group Supported Employment, and Volunteer Services. Individual Employment assists the individual with securing and sustaining competitive employment in the community. Group Supported Employment assists individuals working in a group setting with other program clients and company employees. Volunteer Services assists individuals with obtaining and participating in volunteer opportunities to enhance employability skills, and to become contributing members of their community.

## Top Workplaces 2012

ACES was selected as one of the Top Workplaces 2012 based on feedback from an agency-wide employee survey. Sponsored by Hearst Publications / The Connecticut Post, ACES was selected as one of the top five large companies (companies with three hundred or more employees). The employee survey was based on six key criteria: direction, conditions, career, execution, managers and pay and benefits.



### Employee Insights on What Makes ACES a Top Workplace

*"I am impressed by how respected the agency is to the world beyond our doors, and how many children and families have been helped, and continue to depend on ACES, when other education opportunities have been not the right choice for them or exhausted."*

*"They are always looking for ways to improve and keep us technologically up-to-date."*



Top Workplaces 2012 Reception, September 2012

*"The ACES mission and goals drive the agency and important decisions."*

*"The ability of the staff to work together for the achievement and success of our students."*

*"The people are so wonderful and caring. I feel so blessed to be a part of this great agency. the work that I do every day has been a very positive and wonderful joy in my life - words can never express it."*

*"New ideas are always welcome and encouraged at ACES."*

## ACES Convocation 2012

### *Creating the Opportunity to Learn*

On Tuesday, November 6, 2012, ACES created an opportunity for its 900+ staff members to learn from one another, participate in school climate training activities and cultivate relationships with colleagues at its annual agency-wide convocation. The keynote speaker was Dr. Pedro Noguero, Peter L. Agnew Professor of Education at New York University and author of more than nine books and numerous articles, including, *Creating the Opportunity to Learn: Moving from Research to Practice to Close the Achievement Gap* (ASCD 2011) that he authored with A. Wade Boykin.



ACES Convocation 2012, Thomas Edison Middle School, November 6, 2012

L to R Keynote speaker Dr. Pedro Noguero; ACES Human Resources Director Claudette Beamon; ACES Staff



# ACES 50 Paces to Wellness



ACES Human Resources Department, in partnership with the ACES Wellness Committee introduced an agency-wide wellness initiative designed to inspire and support employees good health and well-being, optimal performance, and better attendance. Employees, who chose to participate, were asked to commit to increased exercise, better eating habits, healthier lifestyles and preventive care. Incentives were offered to encourage participation.

Our marketing campaign included featured stories and information daily on the ACES internal website, published materials in buildings, and word of mouth encouragements from colleagues which resulted in 300+ employees participating in this new initiative. Cigna, our insurance carrier at the time, provided financial support. An intern from Quinnipiac University provided hands-on support.

On June 1, 2013 over 200 ACES staff and their families participated in the Wellness Field Day, the program's culminating event, that featured games, activities, prizes and wonderful camaraderie.

Throughout the course of the year, many employees expressed their appreciation for this initiative or sent emails and/or letters praising the program and the field day experience, including:

*"... Last night during his bath, my son Will said, 'I had fun at the Field Day.' It had to have been fun for a two year old to bring it up a day later. We both had a great time ..."*

*"Thank you so much for the lovely event today. It was totally well-organized and fun. I loved seeing all of the ACES families."*

*"Thank you to the wellness committee for a great day. It was the fun we had in the good old days. Everything was great and I appreciate all the work members did."*

*"Thank you ACES!! This was a GREAT event!!"*



Wellness Celebration, June 1, 2013

# Central Administration

ACES Central Administration is dedicated to providing the sound technology, administration, fiscal and related services necessary to carry out the mission and goals of the agency. ACES Central Administration oversees the smooth and efficient operation of our \$110 million budget, over 900 employees, 15 buildings and 131 vehicles.

**ACES Executive Director** serves as the Chief Executive Officer of ACES as a regional service agency and as the Superintendent of ACES schools.

**ACES Assistant Executive Director for Curriculum and Programs** oversees the development, delivery, and assessment of teaching and learning within ACES schools and education programs.

**ACES Assistant Executive Director for Finance and Operations** oversees the agency's Fiscal Services, Buildings and Grounds, Transportation Services, Technology Services, Marketing and Public Information, all outsourced food services, and serves as a risk manager for the agency's insurances.

**ACES Fiscal Services** processes all purchase orders and invoices for our \$110 million budget, as well as biweekly payroll for over 900 employees.

**ACES Human Resources** manages the agency's efforts to recruit, hire and retain a diverse workforce. This includes new employee orientation; training for employees in the areas of sexual harassment, protection & advocacy, child abuse/neglect and OSHA; benefits administration; employee relations; responding to employees' inquiries/complaints/grievances; managing leaves; interpreting and mediating contractual issues and working conditions; union negotiations; worker's compensation; employment verifications; attorneys' requests; wage garnishments; teacher certification and retirement; minority teacher recruitment; management of the MUNIS Self Service; job postings; and, collaborative work with school districts, and Regional Educational Services Centers on projects pertinent to delivering quality educational services.

**ACES Marketing and Public Information** seeks to increase the organization's visibility across the region and oversees the production of all internal and external publications.

**ACES Program Development** creates new ACES programs to respond to the needs of its own schools and programs and those of its member districts, secures resources to pilot, expand and sustain quality educational programs, leads the ACES Open Choice and ACES Magnet School Parent Choice programs, facilitates the ACES Strategic Planning process, participates in community outreach, and convenes and supports the ACES Education Foundation.

**ACES Pupil-Related and Assistive Technology Services** addresses the needs of local school districts through a team-oriented decision making process in the selection, acquisition and use of assistive device(s).

**LEGEND OF FUNDING SOURCES**

**L:** Local      **F:** Federal  
**S:** State      **O:** Other

# 2012 – 2013 Expenditures

DESCRIPTION	SOURCE	EXPENSE
<b>INSTRUCTIONAL PROGRAMS</b>		
<b>SPECIAL EDUCATION</b>		
Mill Rd	L	6,220,411
Mill Rd Student Activities	O	19,207
SAILS - Standard	L	604,222
SAILS-Intensive	L	2,664,299
SAILS-Activities	O	424
Summer School	L	1,616,809
Transportation	L	2,851,175
Village EIBI	L	3,371,192
Village School	L	5,781,453
Village Student Activities	O	10,582
West Haven High Program	L	331,453
Whitney High School East & West	L	7,683,409
Whitney High School North	L	4,156,330
WHS East/West Student Activity	O	11,267
WHS North Student Activity	O	24,345
		<b>\$ 35,346,578</b>
<b>MAGNET SCHOOLS</b>		
After School - TEMS/WIMS	S	212
ECA Magnet Grant	S	1,519,960
ECA Student Activities	O	63,664
Educational Center for the Arts	S,L	2,596,321
Magnet Transportation-WIMS	S	201,600
MSAP-Learning Through Science	F	332,493
TEMS Magnet Grant	S	5,914,140
TEMS Student Activities	O	1,478
Thomas Edison Middle School	S,L	9,367,048
Title I Improving Basic Programs 6/13	S	299,058
Title I Improving Basic Programs 6/14	S	87,212
Title II A Teachers 6/14	S	40,066
Title II A Teachers 6/13	S	31,018
WIMS After School Program	L	11,230
Wintergreen Magnet Grant	S	4,977,000
Wintergreen Magnet School	S,L	7,394,177
Words! Action! Theatre!	S	106,076
		<b>\$ 32,942,753</b>
<b>REGULAR EDUCATION</b>		
New Haven CHOICE	L	7,802
New Haven FY 11 Carryover	O	469,530
New Haven Magnet Schools	L	384,056
New Haven Voluntary Public Choice	L	51,492
NH Betsy Ross Arts Magnet School	L	723,275
NH Cooperative High School	L	343,545
St. Raphael's Instructional	L	125,332
Urban Youth	L	1,217,157
		<b>\$ 3,332,189</b>
<b>INTERDISTRICT PROGRAMS</b>		
A Passion for Justice	S	41,656
LUCID	S	88,935
Math Counts	S	85,868
Sharing Our Stories	S	45,829
Sister Schools	S	68,490
The Write Stuff	S	86,632
		<b>\$ 417,410</b>
<b>TOTAL INSTRUCTIONAL PROGRAMS</b>		<b>\$ 72,028,930</b>
<b>PUPIL PERSONNEL &amp; SUPPORT SERVICES</b>		
Assistive Technology	L	229,467
Behavioral Services	L	1,731,661
Extension Therapy Services	L	2,343,459
Pupil Services	L	709,811
Student Career & Curriculum Services	L	405,404
		<b>\$ 5,419,801</b>
<b>EARLY CHILDHOOD-EXTERNAL</b>		
Child Development Training	S,L,O	8,015
Early Childhood Services	S,L,O	376,015
Early Head Start 9/11 - 12/12	F	489,625
Early Head Start 1/13 - 12/13	F	356,808
Eastconn-Citels	L	14,900
East Haven Discovery Grant	O	5,691
East Haven United Way	O	4,319
Middletown QE	O	18,000
Mill Rd Family Resource Center	O	359
New Britain Quality Enhancement	L	53,171
New Haven QE II	L	17,750
Wallingford QE	L	2,699
West Haven QE	L	13,318
		<b>\$ 1,390,670</b>
<b>PROFESSIONAL DEVELOPMENT PROGRAMS</b>		
ACES Internal Professional Development	L	39,911
Adv. Alt. Prog.-Library Media Spec.	L	102,848
Algebra I Moodle 8/12 - 9/13	S	16,453
ARCTELL	L,O	47,553

DESCRIPTION	SOURCE	EXPENSE
Conference Management	S,L,O	103,062
CT System for Educator Evaluation & Dev	L	154,685
Curriculum Consortium	L	197,581
Distance Learning Project	L	1,148
EPFP-Title II Part A Teachers	S,L	15,126
Intel Math PD	S	4,549
MSP Math Grant 1/1/12 - 12/31/13	S	153,092
New Haven Action Research	L	50,000
New Haven Supplemental SIG Funds	L	52,127
New Haven TEAM Support	L	268,309
PDSI Conference Services	L	65,682
PDSI District Agent	L	99,836
ACES Curriculum	L	169,862
Priority Schools	L	184,498
Prof Development/School Improvement	S,L,O	1,661,313
State Personnel Development	L	11,200
Teaching American History FY 10-14	F	78,656
Teaching American History 9/1/10 - 8/31/13	F	296,169
Teaching American History 7/1/11 - 12/31/13	F	337,072
TEAM (Best-ACES)	S	5,500
TEAM (Best-Regional)	S	94,525
Title III A English Acq. 6/13	S	10,475
Title III A English Acq. 6/14	S	29,251
Title III ELL State Level Act 12-13	S	11,553
Virtual High School	L	26,110
<b>TOTAL PROFESSIONAL DEVELOPMENT PROGRAMS</b>		<b>\$ 4,288,146</b>
<b>RESC ENTITLEMENTS</b>		
Administering Open Choice	S	180,683
Choice Transportation	S	2,086,721
RESC Restricted/Unrestricted	S	209,614
<b>TOTAL RESC ENTITLEMENTS</b>		<b>\$ 2,477,018</b>
<b>CAREER SERVICES</b>		
ACCESS - Supported Employment	S,O	1,826,661
Vocational Support Services	L,O	145,336
Workforce Alliance WIA Youth 11-12	O	68,290
Workforce Alliance Summer-State	O	43,668
<b>TOTAL CAREER SERVICES</b>		<b>\$ 2,083,955</b>
<b>ADMINISTRATION</b>		
<b>CENTRAL OFFICE</b>		
ACES Staff Activities	O	8,228
Ofc of the Asst Exec Director-Finance & OPS	L	271,107
Ofc of the Asst Exec. Director-Progs & Curr	L	268,398
Fiscal Services	L	936,529
Governing Board	L	198,279
HR Fingerprint Processing	O	48,898
Human Resources	L	767,747
Information and Marketing Services	L	274,776
Office of the Executive Director	L	394,670
Operations Maintenance	L	454,627
Program Development	L	537,314
Technology Services	L	2,918,891
Wellness Activities	O	47,188
		<b>\$ 7,126,650</b>
<b>BUILDING OPERATIONS</b>		
ECA/Little Theatre Capital Project	S,O	2,480,843
Operations-204 State Street	L	170,082
Operations-60 United Drive	S,L,O	191,301
Operations-CASDD	S,L	339,802
Operations-ECA	S,L,O	598,525
Operations-Food Services	S,L,O	700,550
Operations-Little Theatre	L	13,862
Operations-Mill Road	S,L	760,552
Operations-Peter C. Young Building	L	457,720
Operations-Staff Development	L	342,251
Operations-TEMS	L	1,813,717
Operations-Village School	L	710,441
Operations-Whitney East	L	458,851
Operations-Whitney N & W	L	619,234
Operations-Wintergreen	L	1,232,512
Operations-ECA/LT Facility	L,O	73,774
		<b>\$ 10,964,016</b>
<b>TOTAL ADMINISTRATION</b>		<b>\$ 18,090,667</b>
<b>GRAND TOTAL 2012-2013 EXPENDITURES</b>		<b>\$ 105,749,188</b>

# 2013 – 2014 Budgets

## LEGEND OF FUNDING SOURCES

**L:** Local                      **F:** Federal  
**S:** State                      **O:** Other

DESCRIPTION	SOURCE	BUDGET
<b>INSTRUCTIONAL PROGRAMS</b>		
<b>SPECIAL EDUCATION</b>		
Mill Rd	L	6,424,420
Mill Rd Student Activities	O	17,202
SAILS-Intensive	L	4,152,748
SAILS-Activities	O	2,349
Summer School	L	1,775,603
Transportation	L	2,664,731
Village EIBI	L	3,892,828
Village School	L	5,906,679
Village Student Activities	O	13,377
West Haven High Program	L	353,448
Whitney High School East & West	L	2,265,195
Whitney High School North	L	4,301,365
WHS East/West Student Activity	O	30,521
WHS North Student Activity	O	14,795
		<b>\$ 31,815,079</b>
<b>MAGNET SCHOOLS</b>		
ECA Magnet Grant	S	1,609,725*
ECA Student Activities	O	56,154
Educational Center for the Arts	S,L	2,694,431
Magnet Transportation-WIMS	S	162,500*
MSAP-Learning Through Science	F	124,059
TEMS Magnet Grant	S	6,135,000*
TEMS Student Activities	O	18,772
Thomas Edison Middle School	S,L	9,608,584
Title I Improving Basic Programs 6/14	S	48,333
Title I Improving Basic Programs 6/15	S	374,978*
Title II A Teachers 6/14	S	19,388
Title II A Teachers 6/15	S	60,000*
WIMS After School Program	L	26,884
Wintergreen Magnet Grant	S	5,119,200*
Wintergreen Magnet School	S,L	7,499,079
		<b>\$ 33,557,087</b>
<b>REGULAR EDUCATION</b>		
New Haven FY 13 Carryover	O	477,824*
New Haven Magnet Schools	L	354,000*
New Haven Voluntary Public Choice	L	60,000*
NH Betsy Ross Arts Magnet School	L	1,102,411*
NH Cooperative High School	L	519,549*
St. Raphael's Instructional	L	125,671*
Urban Youth	L	1,179,750*
		<b>\$ 3,819,205</b>
<b>INTERDISTRICT PROGRAMS</b>		
LUCID	S	97,000
Math Counts	S	89,639
Sharing Our Stories	S	58,046
Sister Schools	S	72,545
The Write Stuff	S	122,707
World & English Language Learners	S	69,188
		<b>\$ 509,125</b>
<b>TOTAL INSTRUCTIONAL PROGRAMS</b>		
		<b>\$ 69,700,496</b>
<b>PUPIL PERSONNEL &amp; SUPPORT SERVICES</b>		
Assistive Technology	L	314,897
Asthma Initiatives	L,O	170
Behavioral Services	L	972,016
Extension Therapy Services	L	2,617,904
Extension Therapy Services-Handwriting Project	O	1,735
Pupil Services	L	772,549
Student Career & Curriculum Services	L	436,108
		<b>\$ 5,115,379</b>
<b>EARLY CHILDHOOD-EXTERNAL</b>		
Child Development Training	S,L,O	4,182
Early Childhood Services	S,L,O	382,767
Early Head Start 1/13 - 12/13	F	462,090
East Haven Discovery Grant	O	10,250
East Haven United Way	O	632
Middletown QE	O	18,000
Mill Rd Family Resource Center	O	628
New Britain Quality Enhancement	L	53,271
New Haven QE II	L	13,300
West Haven QE	L	13,318
		<b>\$ 958,438</b>
<b>PROFESSIONAL DEVELOPMENT PROGRAMS</b>		
ACES Internal Professional Development	L	112,752
Adv. Alt. Prog.-Library Media Spec.	L	153,290
ARCTELL	L,O	181,338

DESCRIPTION	SOURCE	BUDGET
Conference Management	S,L,O	128,396*
Curriculum Consortium 3.0	L	436,358
EPFP-Title II Part A Teachers	S,L	16,947*
New Haven Action Research	L	50,000
New Haven Supplemental SIG Funds	L	84,880
New Haven TEAM Support	L	472,145
NHPS Transition Services	L	9,600
PDSI Conference Services	L	14,238
PDSI District Agent	L	38,783
ACES Curriculum	L	457,959
Priority Schools	L	416,405
Professional Development/School Improvement	S,L,O	1,883,167
State-Wide Pilot-Educator Evaluations	S	172,485
Teaching American History FY 10-14	F	7,313
Teaching American History 9/1/10-12/31/13	F	153,561
Teaching American History 9/1/10-12/31/13	F	43,229
TEAM (BEST-ACES)	O	5,500*
TEAM (BEST-Regional)	S	103,000
Title II Tech	F	8,357
Title III A English Acq. 6/15	S	35,000*
Title III A English Acq. 6/14	S	5,832
Title III ELL State-Level Activities 7/1/12-9/30/13	S	23,447
Title III ELL State-Level Activities 12-14	S	35,000
Virtual High School	L	26,100*
Waterbury Technology PD	L	1,892
		<b>\$ 5,076,974</b>
<b>TOTAL PROFESSIONAL DEVELOPMENT PROGRAMS</b>		
		<b>\$ 5,076,974</b>
<b>RESC ENTITLEMENTS</b>		
Administering Open Choice	S	173,650
Choice Transportation	S	1,722,500*
RESC Restricted/Unrestricted	S	209,614*
		<b>\$ 2,105,764</b>
<b>TOTAL RESC ENTITLEMENTS</b>		
		<b>\$ 2,105,764</b>
<b>CAREER SERVICES</b>		
ACCESS - Supported Employment	S,O	2,061,231
ACCESS - Gardening	O	988
Vocational Support Services	L,O	149,223
Workforce Alliance WIA Youth 13-14	O	80,000
Workforce Alliance Summer-State	O	39,000
		<b>\$ 2,330,442</b>
<b>TOTAL CAREER SERVICES</b>		
		<b>\$ 2,330,442</b>
<b>ADMINISTRATION</b>		
<b>CENTRAL OFFICE</b>		
ACES Staff Activities	O	726
Ofc of the Asst Exec Director-Finance & OPS	L	281,428
Ofc of the Asst Exec. Director-Progs & Curriculum	L	259,659
Fiscal Services	L	1,023,329
Governing Board	L	243,967
HR Fingerprint Processing	O	51,130
Human Resources	L	842,146
Information and Marketing Services	L	271,734
Office of the Executive Director	L	409,004
Operations Maintenance	L	435,845
Program Development	L	586,778
Technology Services	L	3,564,296
Wellness Activities	O	1,089
		<b>\$ 7,971,131</b>
<b>BUILDING OPERATIONS</b>		
Capital Improvements Plan	L	2,737,228
Deferred Maintenance	L	200,000
ECA/Little Theatre Capital Project	S,O	4,628,927
Operations-204 State Street	L	229,168
Operations-60 United Drive	S,L,O	244,714
Operations-CASDD	S,L	380,700
Operations-ECA	S,L,O	809,025
Operations-Food Services	S,L,O	954,253
Operations-Little Theatre	L	38,991
Operations-Mill Road	S,L	803,358
Operations-Peter C. Young Building	L	448,624
Operations-Staff Development	L	424,059
Operations-TEMS	L	2,035,380
Operations-Village School	L	688,226
Operations-Whitney East	L	513,086
Operations-Whitney N & W	L	688,482
Operations-Wintergreen	L	1,308,090
Operations-ECA/LT Facility	L,O	92,054
		<b>\$ 17,224,365</b>
<b>TOTAL ADMINISTRATION</b>		
		<b>\$ 25,195,496</b>
<b>GRAND TOTAL 2013-2014 EXPENDITURES</b>		<b>\$ 110,482,990</b>

# 2012- 2013 Service Recipients

	Ansonia	Bethany	Branford	Cheshire	Derby	East Haven	Hamden	Meriden	Middletown	Milford	Naugatuck	New Haven	North Branford	North Haven	Orange	Oxford	Seymour	Wallingford	Waterbury	West Haven	Wolcott	Woodbridge	Reg Dist #5	Reg Dist #13	Reg Dist #16	ACES Programs	Other (#)
<b>SPECIAL EDUCATION SCHOOLS</b>																											
CASDD	*			*	*	*	*	*	*	*	*	*	*	*			*	*	*	*	*	*					8
Mill Road School	*		*		*	*	*	*	*	*	*	*	*	*		*		*	*	*	*	*					11
Village School	*	*	*	*	*	*	*	*	*	*	*	*	*	*	*	*	*	*	*	*	*	*	*	*	*		22
Whitney East/West	*		*	*	*	*	*	*	*			*	*	*				*	*	*	*		*				7
Whitney North	*		*		*	*	*	*	*	*	*	*	*	*	*			*	*	*	*	*					14
<b>MAGNET SCHOOLS</b>																											
ECA	*		*	*		*	*	*		*		*	*	*		*	*	*		*			*	*	*		9
TEMS							*	*	*		*		*					*	*				*		*		4
WIMS	*		*		*	*	*	*		*		*	*	*				*		*		*	*				3
<b>SERVICES</b>																											
ACCESS			*			*	*			*		*	*	*	*			*		*							10
Behavior Services	*	*			*	*		*	*			*	*	*			*	*			*	*		*	*		6
Early Childhood						*	*		*			*						*		*							6
Extension Therapy	*	*	*		*	*		*			*	*		*		*	*			*		*	*	*	*		3
YNNH, St. Raphael Campus	*					*	*	*	*		*	*	*	*		*	*	*	*	*	*			*			15
In-District Collaboratives																				*							
Minority Teacher Recruitment								*			*							*	*	*						*	6
Open Choice	*	*	*	*	*	*	*	*		*	*	*	*	*	*				*	*	*	*	*	*	*	*	8
PDSI	*	*	*	*	*	*	*	*	*	*	*	*	*	*	*	*	*	*	*	*	*	*	*	*	*	*	2
Program Development	*	*	*	*	*	*	*	*	*	*	*	*	*	*	*			*	*	*	*	*	*	*	*	*	5
Pupil-Related Services	*		*		*	*	*	*	*	*	*	*	*	*	*	*	*	*	*	*	*	*			*	*	24
Assistive Technology	*	*	*		*	*						*	*	*	*	*	*	*	*	*	*	*	*	*	*		1
Technology Services	*	*	*				*	*										*	*		*	*		*	*	2	
Transportation	*				*	*	*		*			*			*					*	*	*		*	*		

## Major Interagency Relationships and Sources of Funding

ACES maintains strong relationships with the school districts that created and govern the organization. This connection with member districts, plus other local funds, accounts for approximately 75.6% of ACES financial support. Programs ranging from education for students with cognitive, emotional and physical challenges to training programs for staff from the school districts are financially supported by the member school districts through tuition and fees for services.

The second major source of support is the Connecticut State Department of Education (CSDE). ACES receives grants and contracts primarily for state initiatives, such as the Magnet School initiative, Interdistrict Grants, the Open Choice program, Professional Development Activities, School Construction Projects, Enhancing Education Through Technology, and School Readiness programs. These programs have an impact on both school districts and local communities. This support accounts for approximately 19.10% of ACES income.

The third major ACES interagency relationship involves the Connecticut Department of Developmental Services (DDS). ACES principal involvement with this agency is through programs for disabled adults. This funding represents approximately 2% of ACES budget.

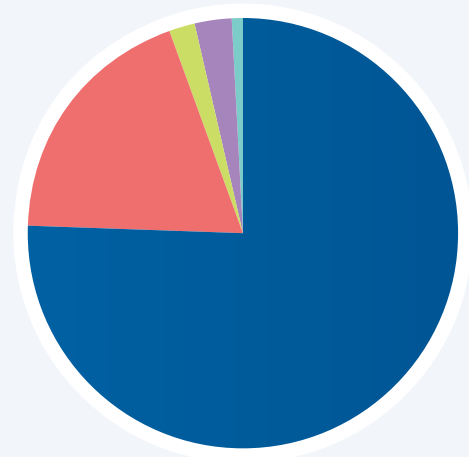
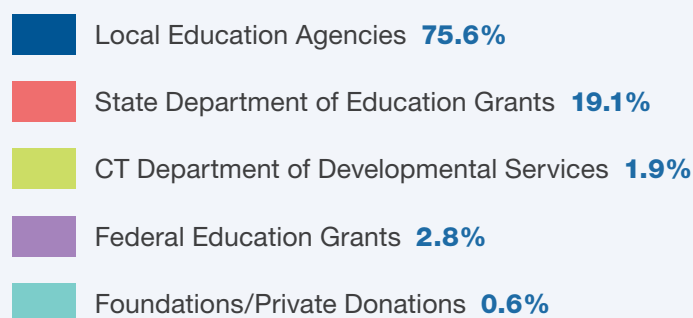
The fourth major source of support for ACES programs is federal funding through grants for educational programming. This source accounts for 2.8% of the total budget.

The final category of major revenue is from private sources in the form of grants from charitable foundations and other special contracts. These grants and “other” contracts represent approximately .60% of the ACES annual budget.

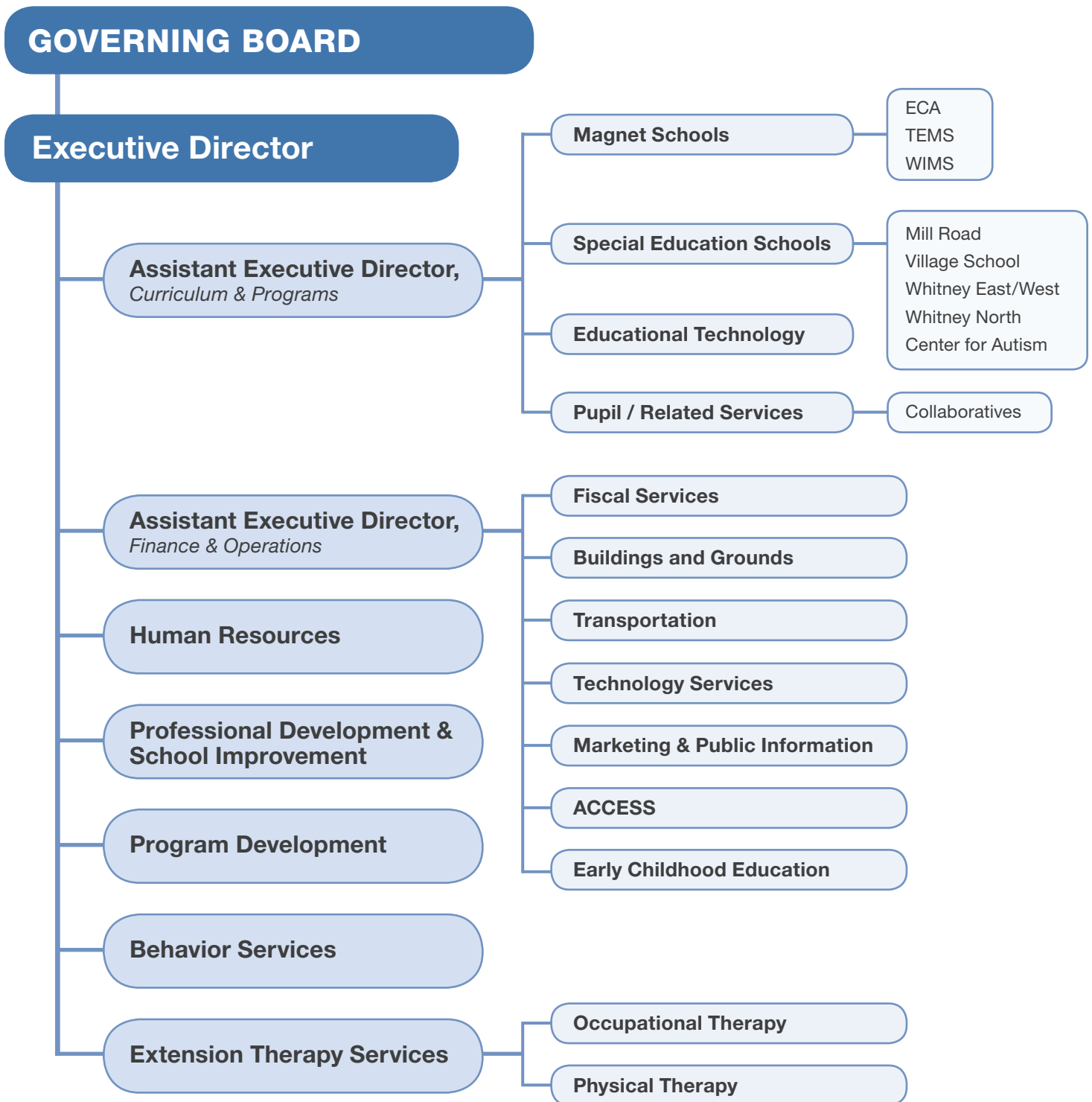
ACES is a member of the Connecticut Alliance of Regional Educational Service Centers and works closely with the other RESCs on collaborative projects.

In 2004 ACES launched the ACES Education Foundation as a separate nonprofit organization. The purpose of the Foundation is to identify private sources of funding and raise awareness of the organization’s programs and services. Thanks to the support of community partners and individuals, the ACES Education Foundation was able to award \$53,970 in grants in 2012.

### ACES Funding Sources



# ACES Organizational Chart



## Central Administration

### **Peter C. Young** **Administration Building**

350 State Street  
North Haven, CT 06473  
203.498.6800  
Directions: 203.498.6885

### **Executive Director**

Craig W. Edmondson, Ed.D.  
203.498.6817

### **Assistant Executive Director, Curriculum and Programs**

Erika Forte  
203.498.6815

### **Assistant Executive Director, Finance and Operations**

Gary J. Shettle  
203.498.6835

### **Human Resources**

Claudette J. Beamon  
203.498.6810

### **Program Development**

Carolyn McNally, Ed.D.  
203.498.6842

### **Marketing and Public Information**

Evelyn Rossetti-Ryan, Ed.D.  
203.498.6881

## Schools

### **ACES Center for Autism Spectrum and Developmental Disorders**

26 Old Post Road  
Northford, CT 06472  
Linda DeFrancesco  
203.484.9501

### **ACES Educational Center for the Arts**

55 Audubon Street  
New Haven, CT 06510  
Jason Hiruo  
203.777.5451

### **ACES Mill Road School**

295 Mill Road  
North Haven, CT 06473  
Cindy Ratchelous  
203.234.0303

### **ACES Thomas Edison Middle School**

1355 No. Broad Street  
Meriden, CT 06450  
Karen Habegger  
203.639.8403

### **ACES Village School**

31 Temple Street  
North Haven, CT 06473  
Carol Bunk  
203.234.7611

### **ACES Whitney High School West & East**

205 Skiff Street / 261 Skiff Street  
Hamden, CT 06517  
Gina Drury  
203.407.4500 / 203.281.3577

### **ACES Whitney High School North**

205 Skiff Street  
Hamden, CT 06517  
Mark Dougherty  
203.407.4500

### **ACES Wintergreen Interdistrict Magnet School**

670 Wintergreen Avenue  
Hamden, CT 06514  
Suzanne Duran-Crelin  
203.281.9668

## Services

### **Pupil Services and Collaborative Programs**

350 State Street  
North Haven, CT 06473  
Vanessa Taragowski  
203.498.6849

### **Behavior Services**

31 Temple Street  
North Haven, CT 06473  
Donn Sottolano, Ph.D.  
203.234.7611

### **Early Childhood Services**

205 Skiff Street  
Hamden, CT 06517  
Alice Torres, Ed.D.  
203.407.4441

### **Professional Development and School Improvement**

205 Skiff Street  
Hamden, CT 06517  
Leslie Abbatiello  
203.407.4402

### **Extension Therapy Services**

205 Skiff Street  
Hamden, CT 06517  
Laura Evangelist  
203.407.4470

### **ACES ACCESS**

60 United Drive  
North Haven, CT 06473  
Chidi Onukwughu  
203.234.1344

### **ACES Technology Services**

204 State Street  
North Haven, CT 06473  
Steven Manley  
203.287.6840

### **Educational Technology**

350 State Street  
North Haven, CT 06473  
Wanda Wagner  
203.498.6804

### **ACES Transportation**

60 United Drive  
North Haven, CT 06473  
Dawn Carranzo  
203.234.2406

### **ACES Buildings and Grounds**

60 United Drive  
North Haven, CT 06473  
Joseph Tommaselli  
203.234.1344

---

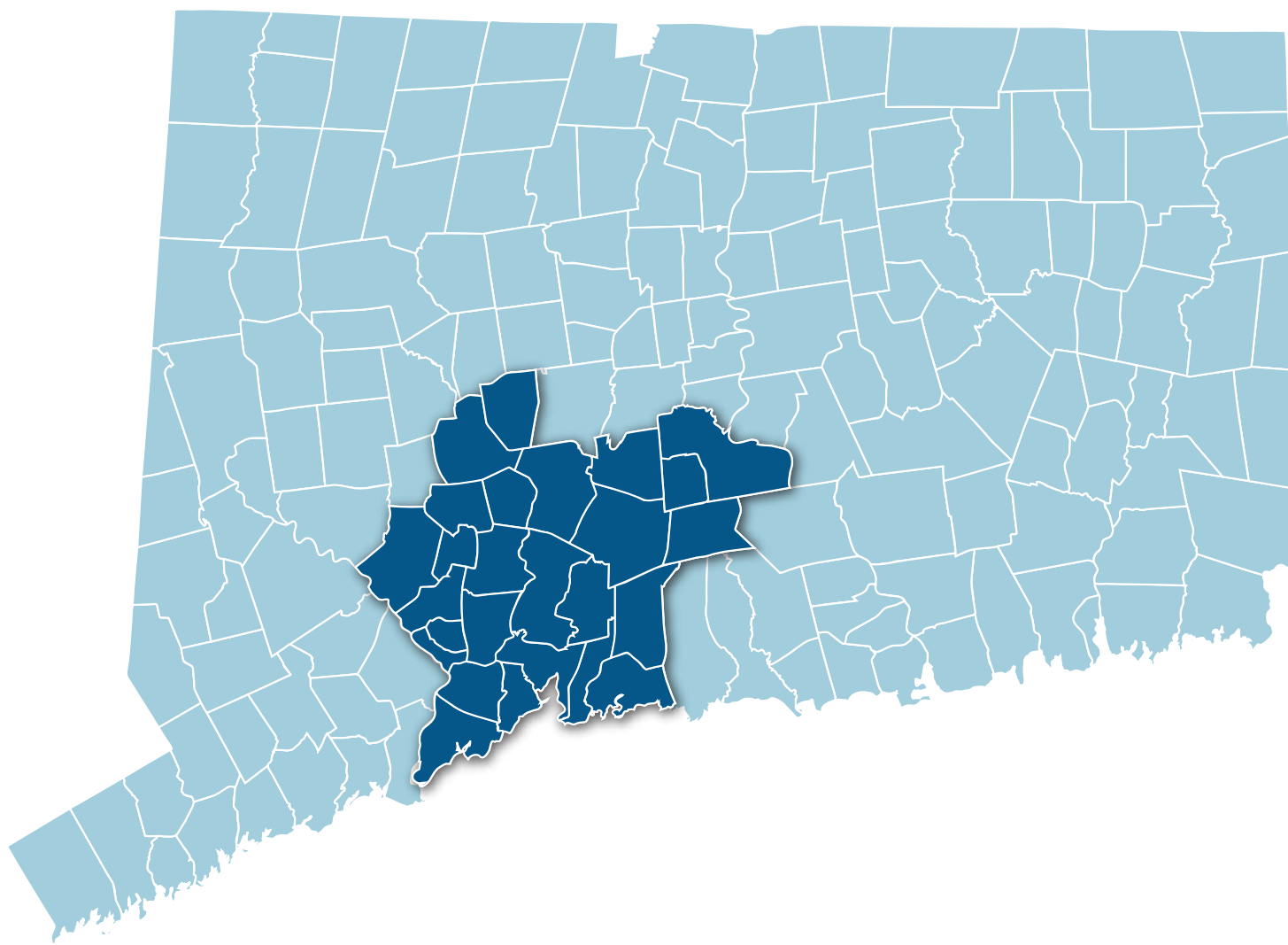
### **Annual Report Design:**

Untapped Resources, Inc.  
[www.untappedusa.com](http://www.untappedusa.com)  
860-379-3379



# ACES Member Districts

Ansonia	Middletown	Regional District #5	Seymour
Bethany	Milford	(Bethany, Orange, Woodbridge)	Wallingford
Branford	Naugatuck	Regional District #13	Waterbury
Cheshire	New Haven	(Durham, Middlefield)	West Haven
Derby	North Branford	Regional District #16	Wolcott
East Haven	North Haven	(Beacon Falls, Prospect)	Woodbridge
Hamden	Orange		
Meriden	Oxford		



# aces

## INNOVATORS IN EDUCATION

---

350 State Street • North Haven, CT 06473

203.498.6800

[www.aces.org](http://www.aces.org)

