



aces

**2015-2016
ANNUAL REPORT**

www.aces.org

THIS ANNUAL REPORT IS DEDICATED IN MEMORY OF
Dennis Ensinger, Rose Morrow, & Darlene Romano

Executive Director's Message	1
Mission & Organizational Beliefs	2
About ACES	3
ACES Member Districts	4
ACES Governing Board	5
ACES At-A-Glance	6
ACES Design Plan 2016	7
ACES Design Team 2016	8
Facilities & Construction Services	9
Personalized Learning Oportunities	10
Digital Citizenship	11
ACES Schools: Interdistrict Magnet Schools	12
ACES Schools: Special Education Schools	13
ACES Services	15
ACES Regional Educational Programming	17
ACES 2015-2016 Teacher of the Year/ Executive Director Recognition Awards	19
ACES Central Administration	20
The Connecticut RESC Alliance	21
2015-2016 Service Recipients	22
2015-2016 Expenditures	23
2016-2017 Budgets	24
Relationships and Funding	25
ACES Organizational Chart 2016-2017	26
ACES Directory 2016-2017	27

Area Cooperative Educational Services does not discriminate on the basis of race, color, age, ethnicity, national origin, religion, gender, marital status, disability or sexual orientation.

Copyright © 2016 Area Cooperative Educational Services – This publication is protected by copyright and all rights are reserved. No parts of this document may be reproduced or transmitted in any form or by any means, electronic or mechanical, for any purpose, without the express permission of Area Cooperative Educational Services.

Front Cover Photo: ACES WIntergreen Interdistrict Magnet School



Greetings:

As Executive Director of Area Cooperative Educational Services (ACES), I am pleased to present our 2015-2016 Annual Report. I thank our twenty-five member school districts, their Board representatives, and our 950-member staff for a highly productive year.

This past year, ACES began new initiatives that will strengthen our services to districts today and tomorrow. Namely, in 2015-2016, ACES

- Embarked on an interactive Design Plan that will provide the road map and infrastructure to face new challenges;
- Launched ACES Construction & Facilities Services;
- Won approval to renovate a new site at 130 Leeder Hill in Hamden to house ACES Whitney High School East / West and ACES Whitney High School North;
- Expanded personalized learning opportunities; and
- Became the first digital citizenship certified district in Connecticut

The history of ACES is filled with examples of how our growth has been a response to our district's evolving needs and how we have served the districts successfully. As we look forward to the next generation of ACES, we will continue to support and to build on the successes of our current services and schools as we grow in new service areas. The range of current trends in education is expansive. Our work ranges from technology's potential to transform how we teach and learn, to dealing with our nation's changing demographics and economic globalization; and from decreasing financial resources to escalating competition for those resources. All of these factors place greater demands on districts which call for new and innovative solutions.

To continue to serve our districts and empower them to meet these challenges, we will need to explore new services and potential business models. The nimbleness required for this transition, combined with the operational needs of an agency that has more than doubled in size in the past 20 years, necessitates a transformation in our infrastructure, a process we have already started with our Munis upgrade and renewed focus on data on both the macro and micro levels. Most importantly, it will require a renewed commitment to embrace the mission of ACES as a collective responsibility where our contributions, individual and programmatic, are for the greater health of the school districts that our agency serves. Through that work, we can continue to serve the needs of students in Greater New Haven and to provide the excellence they have come to expect. The ACES Design Team is scheduled to complete its work before the end of the calendar year. I look forward to sharing our plan with you.

As you read this year's report, I invite you not only to reflect on our 2015-2016 achievements but to envision with me the next generation of ACES.

Sincerely,

A handwritten signature in black ink that reads "Thomas M. Danehy". The signature is written in a cursive, flowing style.

Thomas M. Danehy, Ed.D. | Executive Director



ECA



MILL ROAD

MISSION

To empower our students, member districts and other clients to meet educational and life challenges in the changing global environment by providing collaborative, customized, cost-effective solutions to meet identified needs in our educational community.

ORGANIZATIONAL BELIEFS

- Each individual has inherent worth
- All individuals can learn
- High expectations and effort are essential for higher achievement
- Quality education provides the foundation for the success of the individual and community
- Diversity strengthens an organization
- Individuals are responsible for their own actions
- Everyone has a responsibility to each other and to contribute to the common good
- Honesty and respect are essential for building trusting relationships
- A positive attitude enhances performance
- Collaboration enhances productivity and generates creativity
- Families are essential partners in education
- The willingness to change is necessary for individuals to grow and organizations to thrive



ABOUT ACES

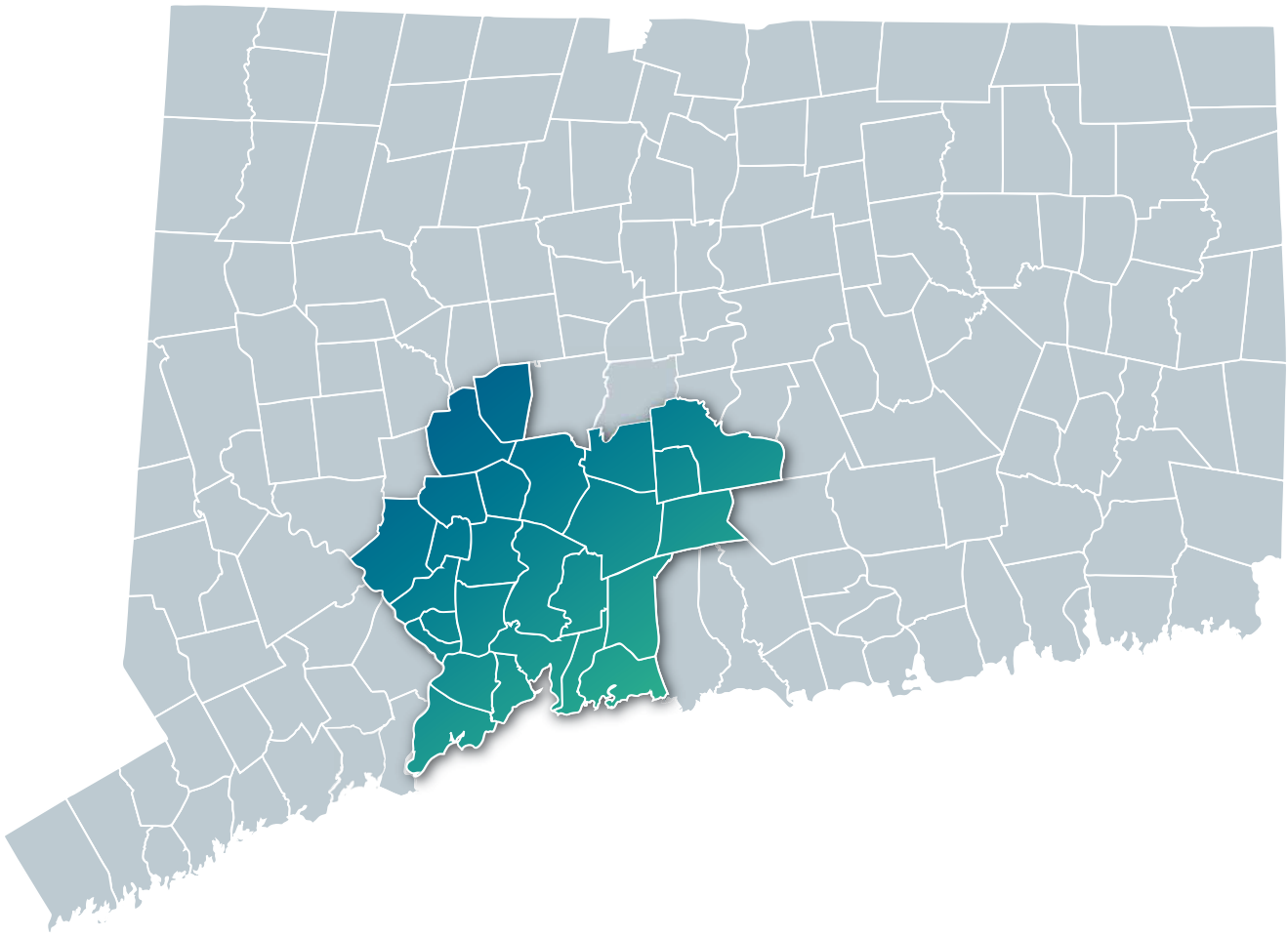
Area Cooperative Educational Services (ACES) has been living its mission: To empower students, member districts, and others to meet educational and life challenges for close to fifty-years. ACES is the regional educational service center for the twenty-five communities in New Haven County. ACES is both a non-profit service organization and a school district that serves over 2,000 students in three magnet and five special education schools.

ACES dedication to better serve its community is exemplified by the wide array of services and programs offered. These include adult and vocational programs, Interdistrict programs, early childhood services which includes the ACES Middlesex County Early Head Start Partnership, behavior services for individuals on the autism spectrum, occupational/ physical therapy, professional development, and technology services. In 2015-2016, ACES created a Construction Services division to provide high-quality, cost-effective construction management to ACES districts.

ACES commitment to equity, diversity, and excellence in education is evident through its leadership in the Open Choice and Magnet School Parent Choice, and Minority Teacher Recruitment initiatives. In 2016, ACES in partnership with Southern Connecticut State University held its third Future Educators Symposium, an event which drew 125 male, high school students of color from ACES, Hamden, Meriden, Middletown, New Haven, Norwalk, Waterbury and West Haven Public Schools. ACES International is a program whose aim is to cultivate international education and exchange and develop global competency in educators and students.

ACES readiness to meet the needs of its community is illustrated by the acquisition and renovation of three new facilities: 130 Leeder Hill in Hamden; 51 Trumbull Street in New Haven; and 300 Washington Street in Middletown. To learn more about ACES, go to www.aces.org.

LEFT PHOTO: Joseph Tommaselli, Manager of Buildings and Grounds with Carol Bunk, Director of Human Resources / **CENTER PHOTO:** ACES Business Advisory Council Members with Representatives from L'Oreal and InnerWorkings / **RIGHT PHOTO:** Timothy Howes, Assistant Executive Director, Finance and Operations, Chidi Onukwugha, Director, ACES ACCESS and Dr. Thomas Danehy, ACES Executive Director



MEMBER DISTRICTS

- | | |
|----------------|--|
| ANSONIA | NORTH HAVEN |
| BETHANY | ORANGE |
| BRANFORD | OXFORD |
| CHESHIRE | REGIONAL DISTRICT #5 (BETHANY, ORANGE, WOODBRIDGE) |
| DERBY | REGIONAL DISTRICT #13 (DURHAM, MIDDLEFIELD) |
| EAST HAVEN | REGIONAL DISTRICT #16 (BEACON FALLS, PROSPECT) |
| HAMDEN | SEYMOUR |
| MERIDEN | WALLINGFORD |
| MIDDLETOWN | WATERBURY |
| MILFORD | WEST HAVEN |
| NAUGATUCK | WOLCOTT |
| NEW HAVEN | WOODBRIDGE |
| NORTH BRANFORD | |

SCHOOL DISTRICT	MEMBER
Ansonia	Fran DiGiorgi
Bethany	Inez Kelso
Cheshire	Cathy Hellreich
Derby	Ken Marcuccio
Hamden	Lynn Campo
Middletown	Vincent Loffredo
Milford	Earl Whiskeyman
Naugatuck	James Scully
New Haven	Vacant
North Branford	Sarah Querfeld
North Haven	Dorothy Logan
Orange	Susan Riccio
Oxford	Paula Guillet
Regional District #16	Vacant
Seymour	Vacant
Wallingford	Karen Hlavac
Waterbury	John Theriault
West Haven	Patricia Libero
Woodbridge	Vacant

EXECUTIVE COMMITTEE MEMBERS

OFFICE	MEMBER	SCHOOL DISTRICT
Chairman	Norman Hicks	Regional District #13
Vice Chairman	Sue Cohen	Regional District #5
Fiscal Officer	Judith Hotz	Branford
Executive Committee	John Finkle	East Haven
Executive Committee	Roberta Leonard	Wolcott
Executive Committee	John Lineen	Meriden

950 Total Employees / **\$87 Million** Total Budget / **19** Buildings Owned & Operated by ACES

25 Communities in the ACES Region / **67** Districts Served by ACES

8 ACES Schools / **1,629** ACES Magnet School Students / **640** ACES Special Education Students

2,269 Total ACES Students / **129** Vehicles in ACES Transportation Services

773 ACES Students & Consumers Transported by ACES Transportation Services

1 Million Fleet Miles Driven by ACES Drivers / **36** Districts Served by ACES Behavior Services

20 Districts/Agencies, **115** Schools, and **1,679** Students Served by ACES Extension Therapy Services
(Occupational & Physical Therapists)

60 Districts Served by ACES Professional Development & School Improvement Services

19,300 Educators Participated in ACES Professional Development Activities

48 Districts and Agencies Participated in ACES Alternative Route to Certification Programs

144 Educators Enrolled in ACES Alternative Route to Certification

28 School Districts and **127** Students Participated in ACES International Activities

14 Districts, **58** Schools, and **484** Students Participated in ACES Open Choice Program

20 Districts and **532** Students Participated in ACES Interdistrict Cooperative Grant Program

70 Businesses Working with ACES Vocational Programs / **111** ACES ACCESS Consumers

As a leader and innovator in education, and to continue successfully empowering our districts to meet their ever-changing needs, ACES has embarked on an interactive design planning process. This process is helping ACES to envision the future as well as create it. Not only will it result in action plans, but it has the potential to produce transformational change as it directly addresses and acts to dissolve our present challenges.

As we look forward to the next generation of ACES, we will continue to support and build on the successes of our current services and schools. The range of current trends in education, from technology’s potential to transform how we teach and learn to our nation’s changing demographics and economic globalization place greater demands on districts that require new and innovative solutions. To continue to serve our districts and empower them to meet the challenges, we will need to explore new services and potential business models.

- Dr. Thomas M. Danehy,
ACES Executive Director



In April 2016, ACES design team members met for its inaugural session, under the guidance of Dr. Susan Leddick of PKR, Inc. A representative sample of ACES stakeholders, this team, includes district superintendents and central office administrators, representatives of community organizations and councils, and ACES employees from a wide range of positions in our schools, services, and infrastructure. The team identified national, state, and local trends influencing the current political and economic climates and explored the interacting dynamics that produce both challenges and opportunities for ACES as an educational service agency. When it reconvenes in September 2016, the team will begin its consideration of **“What would we have in the next generation of ACES if we could have what we want right now?”** and, in developing its answer, will engage the greater membership of the ACES community through a series of focus groups composed of internal and external stakeholders.

Leslie Abbatiello | Director of Professional Development and School Improvement, ACES

Glenn Archer | ACES Business Advisory Council

Claudette Beamon | Assistant Executive Director, Personnel & Special Services, ACES

Dr. Portia Bonner | Superintendent of Schools, East Haven Public Schools

Carol Bunk | Director of Human Resources, ACES

Dr. Thomas Danehy | Executive Director, ACES

Jacquelyn Downing | Director of Grantmaking & Nonprofit Effectiveness, The Community Foundation for Greater New Haven

Dr. Anne Druzolowski | Assistant Superintendent of Schools, West Haven Public Schools

Dr. Karen Dubois-Walton | Executive Director, Housing Authority of New Haven; ECA Parent

Dr. Charles Dumais | Superintendent of Schools, Amity Regional School District 5

Suzanne Duran Crelin | Principal, Wintergreen Interdistrict Magnet School, ACES

Marianne Enslein | Physical Therapist & PT Liaison, Extension Therapy Services, ACES

Erika Forte | Assistant Executive Director, Schools & Programs, ACES

Jody Goeler | Superintendent of Schools, Hamden Public Schools

Robyn Handy | Registered Behavior Therapist, Mill Road School, ACES

Hamlet Hernandez | Superintendent of Schools, Branford Public Schools

Norman Hicks | Regional School District 13 Board of Education, ACES Governing Board Chair

Dr. James Hoko | Director of Behavior Services & Autism Programs, ACES

Timothy Howes | Assistant Executive Director, Finance & Operations, ACES

Typhanie Jackson | Director of Student Services, New Haven Public Schools

William Jacobs | Special Education Teacher, Union President, Whitney High School East/West, ACES

John Lineen | Meriden Public Schools Board of Education, ACES Governing Board Member

Dr. Enza Macri | Associate Superintendent of Schools, Middletown Public Schools

Ana Ortiz | Superintendent of Schools, Oxford Public Schools

Dr. Anne Pember | Curriculum Coordinator, Math, ACES

Cynthia Ratchelous | Principal, Mill Road School, ACES

William Rice | Director of Curriculum & Instruction, ACES; WIMS Parent

Elaine Sein | Executive Assistant, Office of the Executive Director, ACES

Rachel Sexton | Director of Talent Development, ACES

Karen Sgro | Teacher Assistant-Driver, Village School, ACES

Todd Solli | Assistant Principal, Thomas Edison Middles School, ACES

Vanessa Taragowski | Director of Pupil Services, ACES

Oscar Torres | Transportation Coordinator, Union President, ACES

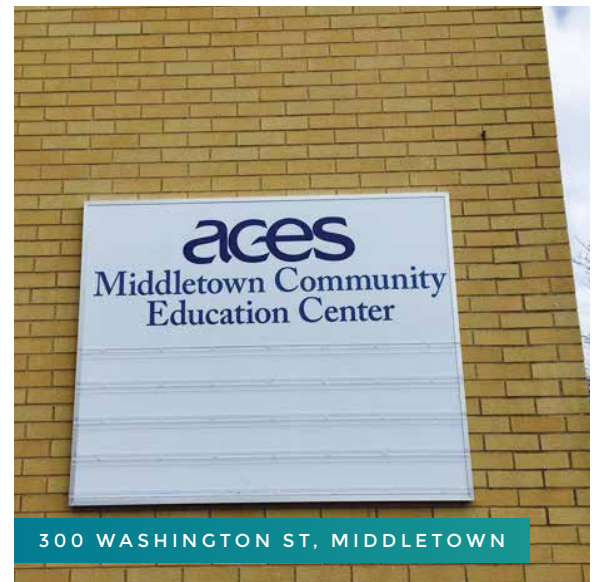
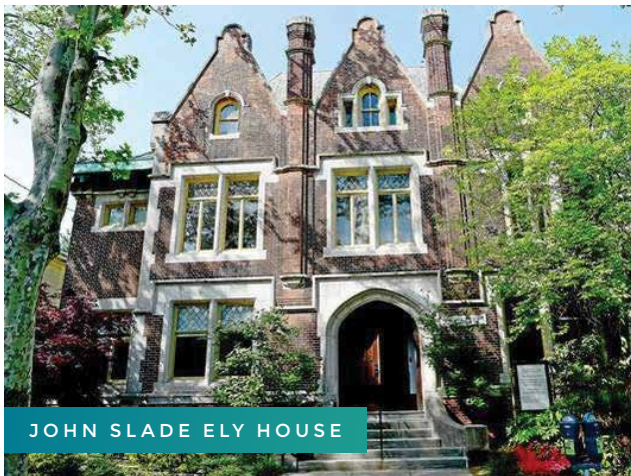
Dr. Wanda Wagner | Director of Educational Technology, ACES

ACES, a leader and innovator in education serves to meet the needs of its member districts by providing customized, cost-effective solutions. Since its inception, ACES has transformed former corporate offices, houses of worship, community -based spaces into vibrant, state-of-the-art learning communities.

ACES owns and operates a total of 19 facilities. In 2015-2016, ACES acquired two new learning facilities: The John Slade Ely House at 51 Trumbull Street in New Haven, 130 Leeder Hill Drive, Hamden and extended its lease at 300 Washington Street in Middletown.

ACES CONSTRUCTION SERVICES

In 2015-2016, ACES Construction Services was established. It offers comprehensive services from owner's representatives to project managers that provide clients with the leadership and expertise needed to manage projects from inception through completion.





TEMS



SUMMER ACADEMY



SUMMER ACADEMY



TEMS

ACES SUMMER ACADEMY

In 2015-2016, ACES expanded its personal learning opportunities to serve students and districts throughout the region. ACES Summer Academy 2016 enrolled students at Amity Regional High School and East Haven High School. Close to eighty-students representing seven school districts participated in the four-week program. Courses were customized to meet the students' needs and their schools' requirements utilizing the Edgenuity online learning program. Credit-recovery as well as enrichment courses were offered. 86% of students who participated in ACES 2016 Summer Academy successfully completed the program.

DERBY SUMMER LEARNING PROGRAM

The Derby Summer Learning Program, an ACES partnership, provided a blended learning summer school to students from the following districts: Ansonia, Derby, Oxford, Shelton, Seymour, and the Emmett O'Brien Technical School.

ACES STEM AT TEMS

ACES Thomas Edison Middle School, a STEM magnet school launched a STEM at TEMS summer science, technology, engineering and math (STEM) camp for students in grades 5 – 7. The program featured hands-on experiments, one-to-one technology, Project Lead the Way Activities, and math support and enrichment activities.



Certified District
2015-2016

ACES RECOGNIZED AS FIRST DIGITAL CITIZENSHIP CERTIFIED DISTRICT IN CONNECTICUT

This past year, ACES became the first Digital Citizenship certified district in Connecticut. This honor was awarded by Common Sense, the national nonprofit organization dedicated to helping kids and families thrive in a digital media and technology world. ACES has demonstrated its commitment to taking the whole-community approach to preparing its students to use the immense power of digital media to explore, create, connect, and learn, while limiting the perils that exist in the online realm, such as plagiarism, loss of privacy, and cyberbullying. To achieve this status, ACES created a Digital Citizenship Professional Learning Community to research evidence and best practice. The Committee completed the digital certification process. They, in turn, worked with ACES schools to share lessons. They also worked with families at family nights and through presentations that focused on parenting and social media.

“We applaud the faculty and staff of ACES for embracing digital citizenship as an important part of their students’ education. ACES deserves high praise for giving its students the foundational skills they need to compete and succeed in the 21st-century workplace and participate ethically in society at-large.”

Rebecca Randall | Vice President of Education Programs for Common Sense Education

ACES has been using Common Sense Education’s innovative and research-based digital citizenship resources, which were created in collaboration with Dr. Howard Gardner of the GoodPlay Project at the Harvard Graduate School of Education. The resources teach students, educators, and parents tangible skills related to Internet safety, protecting online reputations and personal privacy, managing online relationships, and respecting creative copyright.

As a local education agency (LEA), ACES operates a number of schools and educational programs that serve the needs of member school districts across the region. The two primary district needs that ACES address in its schools are: a) issues of academic achievement stemming from racial, ethnic and economic isolation; and b) educating students whose disabilities pose challenges that exceed the capacity of local districts. In response, ACES provides rigorous academic curricula through three interdistrict magnet schools that enroll over 1,600 students, and five special education schools that enroll over 600 students.

ACES Interdistrict Magnet Schools

ACES EDUCATIONAL CENTER FOR THE ARTS (ECA)

is a half-day inter-district magnet high school that prioritizes learning in the performing, literary and visual arts. Students from around Connecticut receive direct instruction and mentoring from practicing, professional artists and arts educators. In 2015-2016, ECA students achieved over 100 national, state, and regional awards in the arts, more than any other school in the state of Connecticut. Located in the heart of New Haven's Arts community, ECA nurtures individual creativity, innovation through risk-taking, and the value in harnessing failure in order to succeed. ECA's creative writers, actors, musicians, visual artists, and dancers are educated with real world experience and utilize their arts education to prepare them as innovative individuals.

ACES THOMAS EDISON MIDDLE SCHOOL (TEMS)

is an Interdistrict magnet school where 6th – 8th-grade students focus on science, technology, engineering, and mathematics. Thomas Edison Middle School's mission is to empower students to use technology effectively in order to become knowledgeable, capable, and ethical digital citizens. In 2015, TEMS incorporated Project Lead the Way (PLTW), an engineering program, to all students in grade 6 and 7. In 2016, 8th grade students will build on their engineering skills through a PLTW program in science, Flight and Space. TEMS is one of the few middle schools in Connecticut to offer Project Lead The Way to their entire student body.

ACES WINTERGREEN INTERDISTRICT MAGNET SCHOOL (WIMS)

is a K-8 Magnet school serving over 630 students from more than a dozen Connecticut school districts. ACES Wintergreen Interdistrict Magnet School is dedicated to educating the whole child through inquiry, innovation, and the arts in a diverse, compassionate and mindful learning community. Wintergreen's rigorous curriculum is designed and implemented to prepare students for college and to launch them into adulthood with a deep understanding of our global interconnectedness. Mindfulness and restorative practices are infused throughout the school day in many Wintergreen classrooms. These practices have proven to be foundational for learning as they decrease stress and increase attention, focus, and social and emotional wellness.

ACES Special Education Schools

ACES CENTER FOR AUTISM SPECTRUM & DEVELOPMENTAL DISORDERS (CASDD)

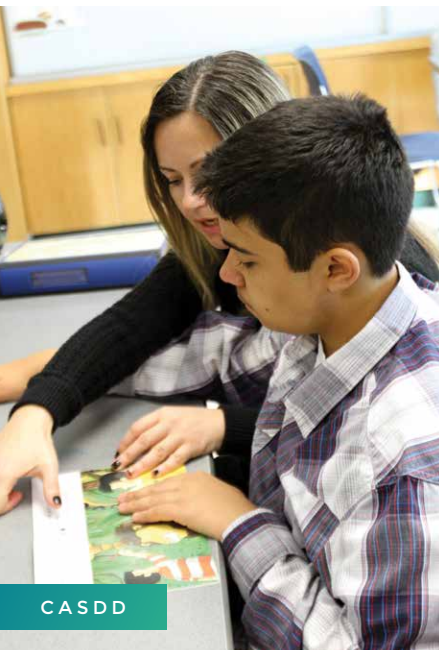
is an educational and clinical program serving students ages 11 – 21 with autism spectrum and developmental disorders. CASDD uses the Science-based Approaches to Independence and Life Skills (SAILS) program. Developed at ACES, the SAILS program is based in the science of applied behavior analysis. Staff facilitate student independence through the instruction of academic, community, executive, social, communication, and life skills.

ACES MILL ROAD SCHOOL

is a K-8 school which encompasses two programs: The Mill Road Program and the Urban Youth Elementary Program. The Mill Road Program serves children K-8th grade with serious social, emotional and behavioral difficulties, including students on the autism spectrum. The New Haven Urban Youth Elementary Program, a combined regular K – 5th grade and special education program, serves students with emotional, educational and social issues in an integrated environment.

ACES WHITNEY HIGH SCHOOL EAST & WEST & CREATE

serves a diverse student population between the ages of 14 and 21. The educational program provides students with all of the necessary supports in order to enhance students’ abilities to develop in the areas of academic course work, vocational/employment, life skills, communication, and social skills. ACES CREATE (Continued Relevant Education and Transition Experiences) students are 18 to 21 years of age and are developing transitional, life skills and work skills that will assist students in their ability to be successful, independent working adults within their potential.



CASDD



WHE/W



MILL RD



VILLAGE



WHN

ACES WHITNEY HIGH SCHOOL NORTH

provides a positive, therapeutic, individualized and multifaceted program for high school students with significant behavioral, mental health and learning issues. Students participate in a full academic and vocational program which includes a motivational, behavioral management system. Instructional methods include frequent assessment of student progress and the expanded opportunity for students to receive remediation. In addition to academics, behavior support and a comprehensive vocational program, ACES Whitney High School North features a Literature to Life program, trips to Washington, D.C., Boston and New York as well as the opportunity to take courses at Gateway Community College.

ACES VILLAGE SCHOOL

consists of three units: Preschool, Early Intensive Behavior Intervention (EIBI) for students on the autism spectrum, and Elementary/Middle School programs. The Preschool Unit includes opportunities for integration with typical peers. ACES Village School provides extensive services to children ages 3-14 with a wide range of abilities and complex needs. Related services include speech, physical and occupational therapies, social services, behavioral services, adaptive physical education, music therapy, art therapy and nursing services.

ACES BEHAVIOR SERVICES AND AUTISM PROGRAMS (BSAP)

provides direct and support services for schools, organizations, and families in south-central Connecticut. The services involve behavioral assessment, support plan management and implementation, intensive instructional programming, and staff training/development. Behavior Analysts, ABA Trainers, and Behavior Technicians join with other team members within schools at ACES and beyond to provide effective educational solutions and opportunities. ACES Behavior Services and Autism Programs also provides regional professional development opportunities. Its Behavior Analysis in Education Series (BAES) offers low-cost, high-quality presentations from state, regional, and national experts. The ACES Behavior Analysis in Education Series (BAES) involving low-cost, high-quality presentations from state, regional, and national experts will continue in 2016-2017. These services together with ACES' Home Outreach, complete a continuum of high quality, behavior analytic support to students, districts, and families.

ACES FACILITIES AND CONSTRUCTION SERVICES

maintains the safety and security of ACES buildings and creates state-of-the-art learning facilities. 2015-2016 projects include 300 Washington Street, Middletown; 130 Leeder Hill Drive, Hamden; and 51 Trumbull Street, New Haven.

ACES EARLY CHILDHOOD SERVICES

provides districts and their community partners professional learning opportunities that promote high-quality competency-based interdisciplinary programming for children birth to age 8. In addition to consultation and training to district leaders and early childhood practitioners, our department supports the design and implementation of aligned early childhood experiences Birth to Grade 3, across multiple systems. The Middlesex County Early Head Start Partnership is one example of ACES ECS inter-organizational system approach to providing direct services to children and families. The ACES Middlesex County Early Head Start Partnership, now in its sixth year of federal funding, serves 60 infants/toddlers in six communities. Through regional collaboration, we are able to respond to district and community needs, share best practices, prepare a more qualified workforce, and maximize resources.

ACES EXTENSION THERAPY SERVICES

provides contractual occupational therapy and physical therapy to member school districts, local private schools and agencies. Services are provided as a related service when deemed necessary for a special education student to participate in his and/or her educational curriculum and also to provide, as requested by the LEA or school, support to the general education curriculum. In 2015-2016, Extension Therapy Services provided services to 1679 students, 115 schools and 20 districts/agencies.



ACES PROFESSIONAL DEVELOPMENT AND SCHOOL IMPROVEMENT (PDSI)

provides cost-effective, customized solution pathways to meet the needs of ACES collaborative partners by addressing professional learning at every phase. ACES PDSI works with regional partner districts, CSDE and other clients to anticipate and identify trends, target and access resources, design and implement initiatives and determine program effectiveness through comprehensive data analysis. This year ACES PDSI is expanding access to its Alternate Route to Certification for Library Media Specialists, and Alternative Route to Certification for Teachers of English Language Learners through the addition of ACES-created blended and virtual learning curricula.

ACES TECHNOLOGY SERVICES

supports highly technical infrastructures through network administration; data support; and desktop helpdesk services. Services are provided to ACES schools and programs and through contracted services with our member districts.

ACES TRANSPORTATION SERVICES

provides door to door transportation for students and adults to and from ACES schools and programs as a contractual service to ACES sending districts and state agencies. In 2015-2016, ACES Transportation Services was responsible for the transportation of 673 special education students and 100 adult consumers utilizing a fleet of 112 school vehicles and 17 adult passenger vehicles. The fleet includes 11 yellow school buses that serve students who require the use of a wheelchair.

LEFT PHOTO: ACES Early Childhood Symposium, 2015 / TOP RIGHT PHOTO: ACES Professional Development & School Improvement, ARCTELL Program / BOTTOM RIGHT PHOTO: ACES Behavior Services

ACES ACCESS

provides vocational, and day support option services to adults, 21 years & older, in the greater New Haven County. The vocational wing of the program provides services at approximately 27 community-based sites to support the needs of our business partners.

ACES INTERDISTRICT COOPERATIVE GRANT (IDCG)

program is funded by the Connecticut State Department of Education's Interdistrict Cooperative Grant Program. Its goals are to increase student achievement and to reduce racial, ethnic and economic isolation. In 2015-16, ACES coordinated four programs that engaged 532 students in 20 districts.

ACES INTERNATIONAL

is an educational program for learning communities seeking advancement in cultural competency and real-world experience. Established in 2014, AI has facilitated collaboration between hundreds of students and educators to promote sister school exchange, online classroom collaboration, service-learning projects, on-site professional learning, and intercultural education study tours.

ACES MAGNET SCHOOL PARENT CHOICE

is coordinated by ACES Program Development department for the ACES region. Families in any non-partner school district can apply to a lottery for open seats in ACES WIMS or TEMS. Families provide student transportation, with a travel subsidy provided by ACES.

ACES OPEN CHOICE

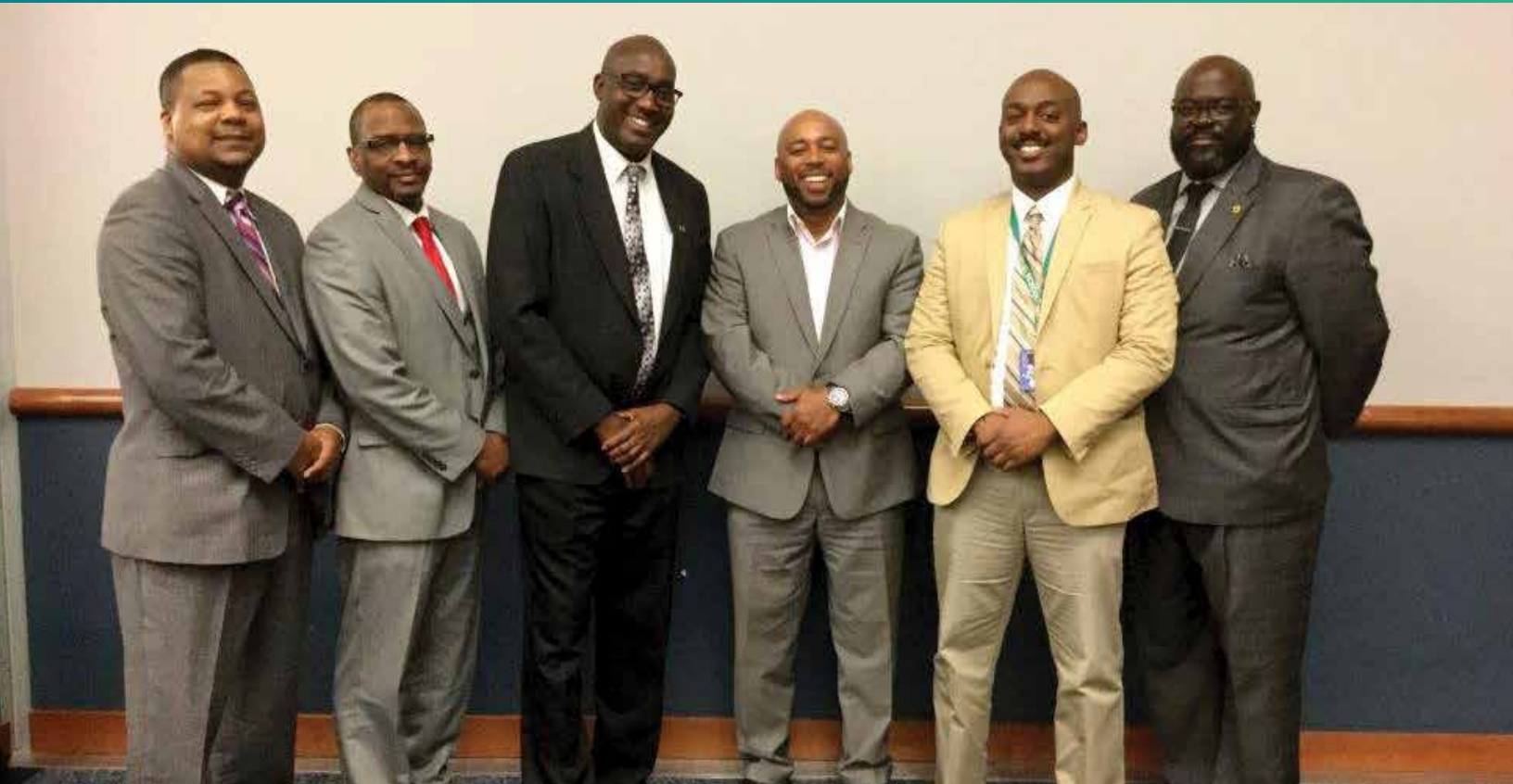
was established in 1996 and provides options for families to choose available openings in urban (New Haven) and suburban schools in the ACES region. In 2015-2016, 484 students, 58 schools and 14 school districts participated in ACES Open Choice Program.

ACES - WEST HAVEN HIGH SCHOOL COLLABORATIVE

provides educational services to fifteen students identified with Intellectual Disabilities at West Haven High School. Daily programming includes academic, vocational, and social skills instruction.

ACES SCHOOL PROGRAM AT YALE-NEW HAVEN HOSPITAL, ST. RAPHAEL CAMPUS

fills a critical gap in the hospital's inpatient mental health services for school-age children. The program keeps students in the care of the hospital's Children's Psychiatric Emergency Services (CPES) on pace academically. The program supports the transition of students in and out of the hospital by serving as a liaison between the family, school, and CPES. Daily group and individualized



ACES Future Educators Symposium Panelists: William Rice, Gary Highsmith, Larry Conaway, Mark Sweeting, Sean Moseley, Kevin Walton

MINORITY TEACHER RECRUITMENT

The ACES Minority Teacher Recruitment Advisory Council hosted the annual Careers-In- Education Job Fair on April 28, 2016, at the ACES SDA Building located at 205 Skiff Street in Hamden. Representatives from ACES, Connecticut Technical High Schools, Hamden, Meriden, Middletown, New Haven, Waterbury and West Haven met with 52 prospective candidates in attendance to discuss the 2016-17 school year vacancies in their respective districts. The Job Fair also featured on-site interviews and a Resume Writing & Interview Skills workshop.

3RD ANNUAL FUTURE EDUCATORS SYMPOSIUM 2016

The ACES MTR Advisory Council, in conjunction with the Southern Connecticut State University School of Education and the RESC MTR Alliance hosted the 3rd Annual Future Educators Symposium on May 3, 2016. The purpose of the Future Educators Symposium was to introduce, inspire and motivate young men of color to consider education as a career choice. 125 male, high school students of color from ACES, Hamden, Meriden, Middletown, New Haven, Norwalk, Waterbury and West Haven Public Schools spent the day at Southern Connecticut State University participating in several activities throughout the day including a panel discussion with current male educators of color, a keynote speaker and interactive breakout sessions which allowed them to share their thoughts and ideas about the education profession.

ACES 2015-2016 TEACHER OF THE YEAR
EXECUTIVE DIRECTOR RECOGNITION AWARD RECIPIENTS



Claudette Beamon, ACES Assistant Executive Director for Personnel and Special Services



Proud Village School Staff Members: Eric Clemons, EDRA Recipient and Wendy Staschke, ACES Teacher of the Year



Norman Hicks & Wendy Staschke, ACES Teacher of the Year



Joyce Meyers, ETS, EDRA Recipient 2016



Eric Clemons, EDRA Recipient from Village School with Dr. Thomas Danehy, ACES Executive Director



Dennis Yacono, WIMS, EDRA Recipient 2016



Erika Forte, ACES Assistant Executive Director for Schools and Programs

ACES Central Administration is dedicated to providing the sound technology, administration, fiscal and related services necessary to carry out ACES mission and goals. Central Administration oversees ACES smooth and efficient operation of our agency.

Executive Director serves as the Chief Executive Officer of ACES as a regional service agency and as the Superintendent of ACES schools.

Assistant Executive Director for Schools and Programs oversees the development, delivery, and assessment of teaching and learning within ACES schools and educational programs.

Assistant Executive Director for Finance and Operations oversees the agency's Fiscal Services, Facilities, Transportation Services, Technology Services, all outsourced food services, and serves as a risk manager for the agency's insurances.

Assistant Executive Director for Personnel and Special Services oversees the following divisions: Behavior Services, Extension Therapy Services, Professional Development & School Improvement, Talent Development and the Human Resources department.

Curriculum and Instruction oversees curriculum development and implementation and innovative learning initiatives.

Educational Technology works with all ACES schools to provide support for classroom instructional technology integration.

Facilities oversees the safety and maintenance of ACES buildings.

Fiscal Services processes all purchase orders and invoices for ACES \$87-million budget and biweekly payroll for 950 employees.

Human Resources manages recruitment and hiring, benefits administration, labor relations, fingerprinting services and minority teacher recruiting for ACES school districts.

Talent Development facilitates organizational development and a system of professional learning in order to grow the agency's greatest resource: its employees.

Public Relations and Marketing seeks to increase the organization's visibility across the region and oversees the production of all internal and external publications, participates in community outreach and coordinates the ACES Education Foundation.

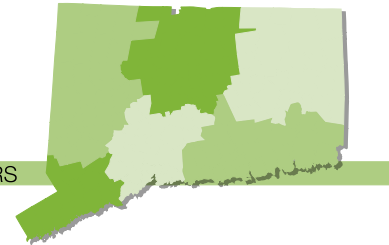
Program Development coordinates ACES Open Choice and ACES Magnet School Parent Choice programs and grant-funded programs including Interdistrict Cooperative Grant programs.

Pupil-Related Services provide ACES internal schools with specialized services such as social work, developmental guidance, psychology services, speech, physical and occupational therapies nursing and psychiatric counseling services.

Assistive Technology Services address the needs of local school districts through a team-oriented decision-making process in the assessment, selection, acquisition and use of assistive device(s).

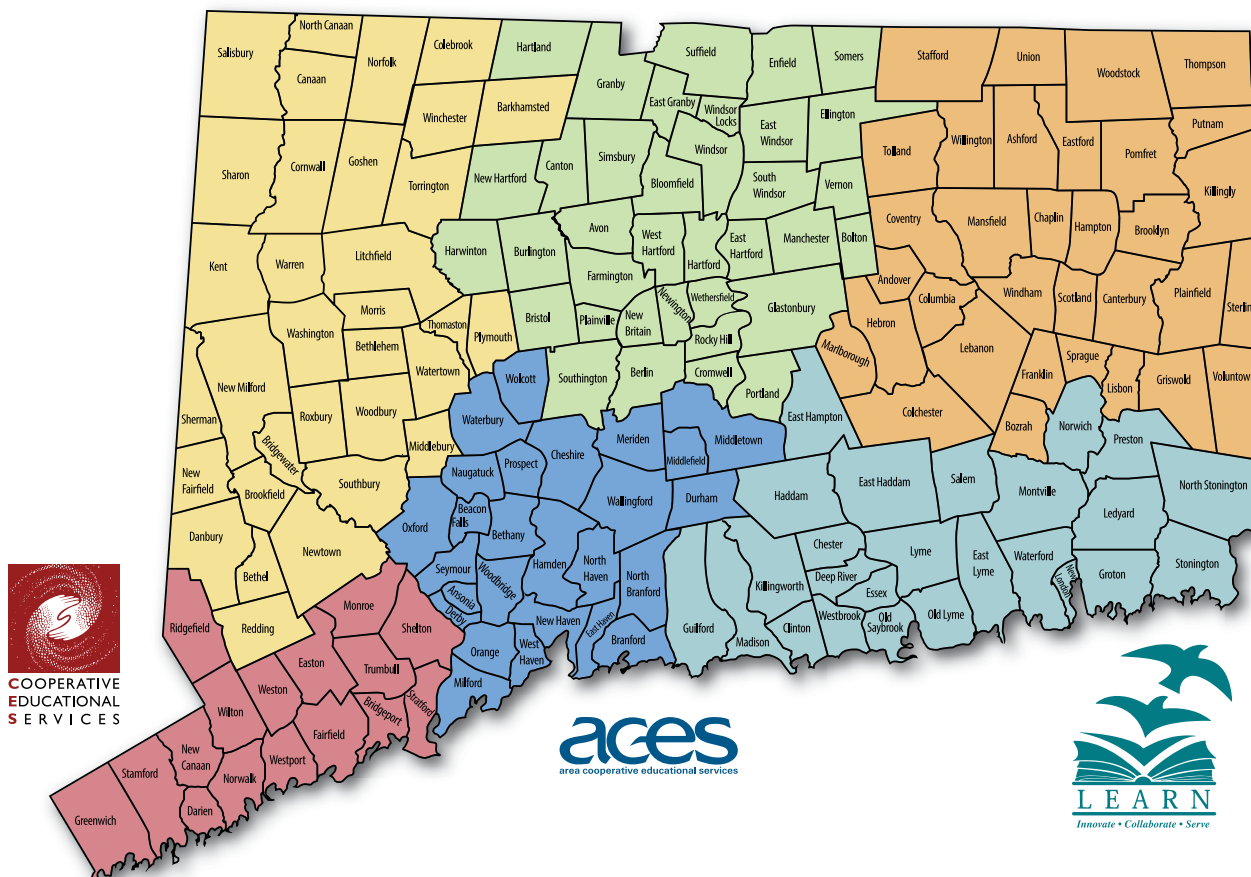
THE RESC Alliance

CONNECTICUT ALLIANCE OF REGIONAL SERVICE CENTERS



THE CONNECTICUT RESC ALLIANCE

ACES is one of six regional educational service centers (RESCs) in Connecticut. All RESCs support Connecticut school districts' instructional and operational components. The RESC Alliance works collaboratively to develop and deliver high-quality, cost-effective collaborative programs and initiatives. For additional information on the RESC Alliance, go to www.rescalliance.org.



	Ansonia	Bethany	Branford	Cheshire	Derby	East Haven	Hamden	Meriden	Middletown	Milford	Naugatuck	New Haven	North Branford	North Haven	Orange	Oxford	Seymour	Wallingford	Waterbury	West Haven	Wolcott	Woodbridge	Reg Dist #5	Reg Dist #13	Reg Dist #16	ACES Programs	Other
SPECIAL EDUCATION SCHOOLS																											
CASDD / SAILS	*				*	*	*		*			*	*			*	*		*		*						6
Mill Road School	*		*		*	*	*	*	*	*	*	*	*	*		*	*	*	*	*	*	*	*				9
Village School	*		*		*	*	*		*			*	*	*	*	*		*	*	*	*	*					23
Whitney East/West/CREATE	*		*	*	*	*	*	*	*	*	*	*		*			*	*	*	*	*						16
Whitney North	*		*	*	*	*	*	*	*	*	*	*		*			*		*	*	*						10
MAGNET SCHOOLS																											
ECA	*		*	*		*	*	*	*	*		*	*	*		*	*	*		*	*		*	*	*		9
TEMS							*	*	*	*	*							*	*					*			
WIMS	*		*		*	*	*	*		*		*	*					*	*	*							1
SERVICES																											
ACCESS			*			*	*	*	*	*		*	*	*	*			*		*		*					
Behavior Services	*	*	*		*	*	*		*			*	*	*	*	*	*	*	*	*	*	*	*			*	17
Early Childhood						*	*	*	*	*		*		*					*	*		*				*	8
Extension Therapy	*	*	*		*	*	*	*	*	*	*	*		*			*	*	*	*	*	*	*	*	*	*	3
YNNH, Hospital of St. Raphael	*		*	*	*	*	*	*	*	*	*	*	*	*	*	*	*	*	*	*	*	*	*	*	*	*	58
In-District Collaboratives	*	*	*																*	*							
Minority Teacher Recruitment						*	*	*	*			*							*	*							
Open Choice	*	*	*	*		*	*		*	*		*	*	*	*			*				*	*				11
PDSI	*	*	*	*	*	*	*	*	*	*	*	*	*	*	*	*	*	*	*	*	*	*	*	*	*	*	34
Program Development	*	*	*			*	*					*		*	*			*		*		*					
Pupil-Related Services	*		*	*		*	*	*	*	*	*	*	*	*	*	*	*	*	*	*	*	*	*	*	*	*	23
Assistive Technology	*	*				*	*	*				*		*	*		*		*	*	*	*	*	*	*	*	2
Technology Services	*	*	*				*	*	*					*	*				*	*	*	*			*	*	4
Transportation	*		*		*	*	*	*	*	*		*	*	*	*			*		*	*	*	*				

2015-2016 EXPENDITURES

PROGRAM/DESCRIPTION	SOURCE	BUDGET	EXPENSE
INSTRUCTIONAL PROGRAMS			
SPECIAL EDUCATION			
1003 Mill Road	L	\$ 7,225,925	\$ 6,989,129
1007 SAILS-Intensive	L	4,547,563	3,932,888
1060 Summer School	L	2,104,620	2,095,578
1040 Transportation	L	2,614,288	2,486,691
1005 Village EIBI	L	4,342,976	3,571,374
1004 Village School	L	6,245,551	6,189,556
1013 West Haven High Program	L	556,438	500,581
1001 Whitney High School East & West	L	8,165,407	7,949,883
1011 Whitney High School North	L	4,628,098	4,564,530
		\$ 38,280,210	

PROGRAM/DESCRIPTION	SOURCE	BUDGET	EXPENSE
MAGNET SCHOOLS			
1203 Educational Center for the Arts	S,L	\$ 2,924,089	\$ 2,842,970
2405 Magnet Transportation-WIMS	S	290,000	300,381
1412 Project Lead The Way	L	54,394	27,360
1210 Thomas Edison Middle School	S,L	10,147,337	9,955,446
2230 Title I Improving Basic Programs 6/16	F	71,231	71,231
2238 Title I Improving Basic Programs 6/17	F	352,499	169,177
2637 Title II A Teachers 6/16	F	55,789	55,789
2239 Title II A Teachers 6/17	F	54,728	-
1205 Wintergreen Magnet School	S,L	7,840,062	7,721,073
		\$ 21,143,427	

PROGRAM/DESCRIPTION	SOURCE	BUDGET	EXPENSE
REGULAR EDUCATION			
1227 New Haven FY15 to FY16 Carryover	O	\$ 765,442	\$ 585,688
1219 New Haven Magnet Schools	L	441,000	426,352
1206 NH Betsy Ross Arts Magnet School	L	699,701	540,232
1204 NH Cooperative High School	L	457,670	401,376
1214 St. Raphael's Instructional	L	143,172	124,912
1218 Urban Youth	L	1,179,750	1,189,507
		\$ 3,268,067	

PROGRAM/DESCRIPTION	SOURCE	BUDGET	EXPENSE
INTERDISTRICT PROGRAMS			
2641 IRISS	S	\$ 122,797	\$ 122,797
2640 LUCID	S	115,280	115,280
1671 Personalized Learning	L,O	50,000	41,734
2218 STEM Explorations	S	49,221	44,504
2212 World & English Language Learners	S	42,297	32,759
		\$ 357,074	
TOTAL INSTRUCTIONAL PROGRAMS		\$ 63,048,778	

PROGRAM/DESCRIPTION	SOURCE	BUDGET	EXPENSE
PUPIL PERSONNEL & SUPPORT SERVICES			
1105 Assistive Technology	L	\$ 336,083	\$ 277,665
1103 Behavioral Services	L	2,746,628	2,832,543
1102 Extension Therapy Services	L	3,602,968	3,177,137
1101 Pupil Services	L	725,171	748,969
1613 Student Career & Curriculum Services	L	474,571	378,673
		\$ 7,414,987	

PROGRAM/DESCRIPTION	SOURCE	BUDGET	EXPENSE
EARLY CHILDHOOD - EXTERNAL			
1801 Early Childhood Services	S,L,O	\$ 403,283	\$ 347,600
2810 Early Head Start 1/15-12/15	F	477,175	477,175
2811 Early Head Start 1/16-12/16	F	431,165	309,309
2851 East Haven Discovery Grant	O	1,785	1,785
1803 Middletown QE	L	18,000	18,000
1804 Meriden QE	L	35,000	34,910
1806 New Haven QE II	L	9,045	8,873
2856 Pre-School Development Grant	O	26,500	26,500
1809 West Haven QE	L	13,318	13,318
		\$ 1,237,470	

PROGRAM/DESCRIPTION	SOURCE	BUDGET	EXPENSE
PROFESSIONAL DEVELOPMENT PROGRAMS			
1603 ACES Curriculum	L	\$ 927,940	\$ 1,053,750
1617 ACES International	O	19,276	9,695
1616 ACES Internal Professional Development	L	126,714	105,108
1624 Adv. Alt. Prog.-Library Media Spec.	L	278,484	145,664
2652 ARCTELL	L	212,963	142,192
1625 ARCTELL - Hartford	L	95,000	90,735
1627 ARCTELL - New Haven	L	95,000	91,701
1626 ARCTELL - Norwich Free Academy	L	95,000	91,696
2662 ARCTELL/Statewide ELL	S	145,761	128,918
1604 Conference Management	S,L,O	100,082	84,872
1631 Curriculum Consortium 3.0	L	106,370	106,370
2633 EPPF-Title II Part A Teachers	S,L	37,344	27,691
2310 Nellie Mae Leadership	O	11,000	11,000
1649 New Haven Action Research	L	47,240	47,240
1641 New Haven Supp. SIG Funds	S	59,798	49,441
1644 New Haven TEAM Support	L	951,073	697,372
1652 PDSI Conference Services	L	55,278	37,671
1658 PDSI District Agent	L	24,583	23,933
1606 Priority Schools	L	13,563	13,530
1602 Professional Development/School Improvement	S,L,O	2,336,304	1,945,393
1643 Review of New Haven Beginning Tch	S	13,799	352
2683 State Personnel Development	O	9,100	9,100
2653 State-Wide Pilot-Educator Evaluations	S	67,482	67,482
2685 Systems of Prof Learning	S	1,221,515	1,221,513
1636 Title II Tech	F	3,042	360
2649 Title III A English Acq. 6/16	F	23,085	23,085
2651 Title III A English Acq. 6/17	F	36,012	27,644
2682 Title III ELL	F	19,560	19,560
1656 Virtual High School	L	25,775	25,775
TOTAL PROFESSIONAL DEVELOPMENT PROGRAMS		\$ 6,298,843	

PROGRAM/DESCRIPTION	SOURCE	BUDGET	EXPENSE
RESC ENTITLEMENTS			
2401 Administering Open Choice	S	\$ 203,515	\$ 203,515
2404 Choice Transportation	S	2,389,922	2,199,571
TOTAL RESC ENTITLEMENTS		\$ 2,403,086	

PROGRAM/DESCRIPTION	SOURCE	BUDGET	EXPENSE
CAREER SERVICES			
1504 ACCESS-Supported Employment	S,O	\$ 2,647,961	\$ 2,428,623
1550 Vocational Support Services	L,O	210,000	205,733
2109 Workforce Alliance Summer-State	O	33,500	33,426
TOTAL CAREER SERVICES		\$ 2,667,782	

GRAND TOTAL 2015-2016:	BUDGET: \$88,231,058	EXPENSE: \$83,070,946
-------------------------------	-----------------------------	------------------------------

Budgets Included in Above:		
Central Office (1401-1410)		\$ 8,320,968
Building Operations (1301-1360)		\$ 9,617,611
Magnet School Operating Grants		\$ 12,382,460
Misc. Grants (Funding not guaranteed on an annual basis)		\$ 317,908

LEGEND OF FUNDING SOURCES: L: Local F: Federal S: State O: Other

PROGRAM/DESCRIPTION	SOURCE	BUDGET
INSTRUCTIONAL PROGRAMS		
SPECIAL EDUCATION		
1003 Mill Rd	L	\$ 7,471,920
1007 SAILS-Intensive	L	4,587,421
1060 Summer School	L	2,181,495
1040 Transportation	L	2,615,136
1005 Village EIBI	L	4,262,111
1004 Village School	L	6,376,267
1013 West Haven High Program	L	669,016
1001 Whitney High School East & West	L	8,411,261
1011 Whitney High School North	L	4,856,979
		\$ 41,431,606

MAGNET SCHOOLS		
1203 Educational Center for the Arts	S,L	\$ 3,031,697
2405 Magnet Transportation	S	209,900 *
1412 Project Lead the Way	L	40,511
1210 Thomas Edison Middle School	S,L	10,289,568
2238 Title I Improving Basic Programs 6/17	F	183,322
2230 Title I Improving Basic Programs 6/18	F	352,000 *
2239 Title II A Teachers 6/17	F	54,728
2637 Title II A Teachers 6/18	F	54,000 *
1205 Wintergreen Magnet School	S,L	8,086,678
		\$ 22,302,404

REGULAR EDUCATION		
1227 New Haven FY 16 Carryover	O	\$ 404,468 *
1219 New Haven Magnet Schools	L	441,000 *
1206 NH Betsy Ross Arts Magnet School	L	699,701 *
1204 NH Cooperative High School	L	457,670 *
1224 RAISE Program - Derby	L	260,000
1214 St. Raphael's Instructional	L	143,000 *
1218 Urban Youth	L	1,179,750 *
		\$ 3,585,589

INTERDISTRICT PROGRAMS		
2641 IRISS (Inquiry, Research, Investigation)	S	\$ 111,171
2640 LUCID	S	104,365
1671 Personalized Learning	L	50,000 *
2218 STEM Explorations	S	44,561
2212 World & English Language Learners	S	36,007
		\$ 346,104
TOTAL INSTRUCTIONAL PROGRAMS		\$ 67,665,703

PUPIL PERSONNEL & SUPPORT SERVICES		
1105 Assistive Technology	L	\$ 488,070
1103 Behavioral Services	L	3,329,470
1102 Extension Therapy Services	L	3,958,795
1101 Pupil Services	L	793,191
1613 Student Career & Curriculum Services	L	474,571
		\$ 9,044,097

EARLY CHILDHOOD - EXTERNAL		
1801 Early Childhood Services	S,L,O	\$ 329,541
2811 Early Head Start 1/16-12/16	F	877,483 *
2812 Early Head Start 1/17-12/17	F	877,483
1804 Meriden QE	L	35,000
1806 New Haven QE	L	10,470 *
2856 Pre-School Development Grant	S	31,900
1809 West Haven QE	L	12,068 *
		\$ 2,173,945

PROGRAM/DESCRIPTION	SOURCE	BUDGET
PROFESSIONAL DEVELOPMENT PROGRAMS		
1603 ACES Curriculum	L	\$ 917,940
1617 ACES International	O	19,276
1616 ACES Internal Professional Development	L	126,714 *
1624 ACRLMS - Library Media	L, O	303,733
2652 ARCTELL	S, L, O	223,498 *
1625 ARCTELL - Hartford	L	95,000
1627 ARCTELL - New Haven	L	95,000
2662 ARCTELL/Statewide ELL	S	16,843
1604 Conference Management	S,L,O	83,708
1623 eACRLMS - Online Library Media	L, O	144,000
2633 EPPP-Title II Part A Teachers	L	36,883 *
1644 New Haven TEAM Support	L	402,867
1642 NHPS Transition Services	L	9,600
1652 PDSI Conference Services	S,L,O	53,000
1658 PDSI District Agent	L	650
1602 Professional Development/School Improvement	S,L,O	2,441,430
1643 Review of NH Beginning Teachers	L	13,447
2653 State-Wide Pilot-Educator Evaluations	S	65,000
1636 Title II Tech	F	2,682
2651 Title III A English Acq. 6/17	F	8,368 *
2649 Title III A English Acq. 6/18	F	36,000
1656 Virtual High School	L	18,700 *
1639 Waterbury Tech PD	L	1,892
TOTAL PROFESSIONAL DEVELOPMENT PROGRAMS		\$ 5,116,231

RESC ENTITLEMENTS		
2401 Administering Open Choice	S	201,005
2404 Choice Transportation	S	2,200,000 *
TOTAL RESC ENTITLEMENTS		\$ 2,401,005

CAREER SERVICES		
1504 ACCESS - Supported Employment	S,O	2,599,814
2112 ServSafe Culinary Arts Training	S	150,000
1550 Vocational Support Services	L,O	33,500
2110 Workforce Alliance Summer-DCF	S	150,000
2109 Workforce Alliance Summer-State	O	33,500
TOTAL CAREER SERVICES		\$ 2,982,275

GRAND TOTAL 2016-2017 BUDGETS	\$89,383,256
--------------------------------------	---------------------

Budgets Included in Above:		
Central Office (1401-1410 & 1370)		\$ 8,515,086
Building Operations (1301-1360)		\$ 7,973,926
Magnet School Operating Grants		\$ 11,918,118 *
Misc. Grants (Funding not guaranteed on an annual basis)		\$ 69,786 *

* Estimated Grants Budgets

LEGEND OF FUNDING SOURCES: L: Local F: Federal S: State O: Other

MAJOR INTERAGENCY RELATIONSHIPS AND SOURCES OF FUNDING

ACES maintains strong relationships with the school districts that created and govern the organization. This connection with member districts, plus other local funds, accounts for approximately 72.94% of ACES financial support. Programs ranging from education for students with cognitive, emotional and physical challenges to training programs for staff from the school districts are financially supported by the member school districts through tuition and fees for services.

The second major source of support is the Connecticut State Department of Education (CSDE). ACES receives grants and contracts primarily for state initiatives, such as the Magnet School initiative, Interdistrict Grants, the Open Choice program, Professional Development Activities, School Construction Projects, and School Readiness programs.

These programs have an impact on both school districts and local communities. This support accounts for approximately 22.30% of ACES income.

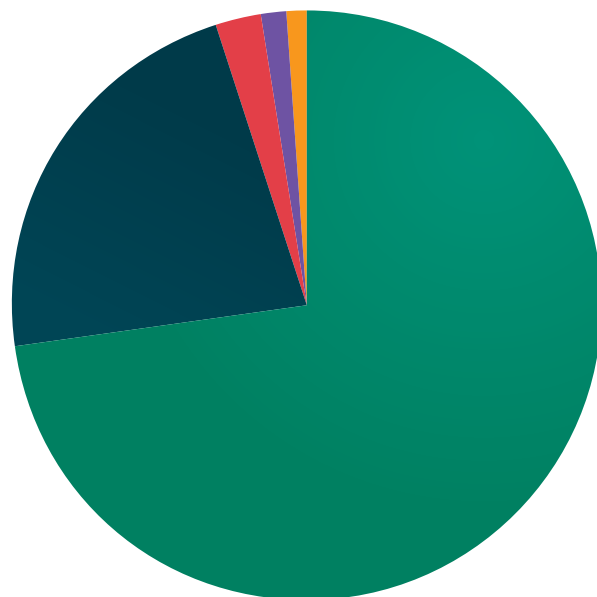
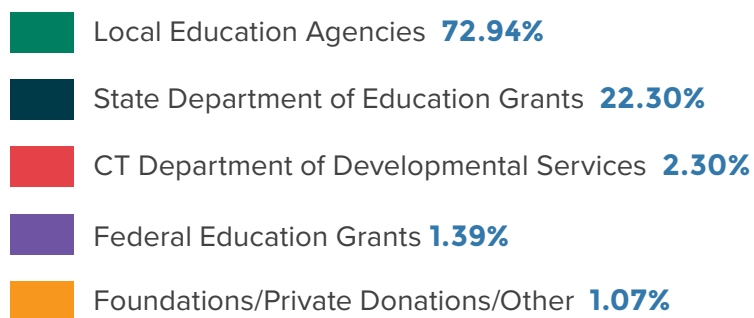
The third major ACES interagency relationship involves the Connecticut Department of Developmental Services (DDS). ACES principal involvement with this agency is through programs for disabled adults. This funding represents approximately 2.3% of ACES budget.

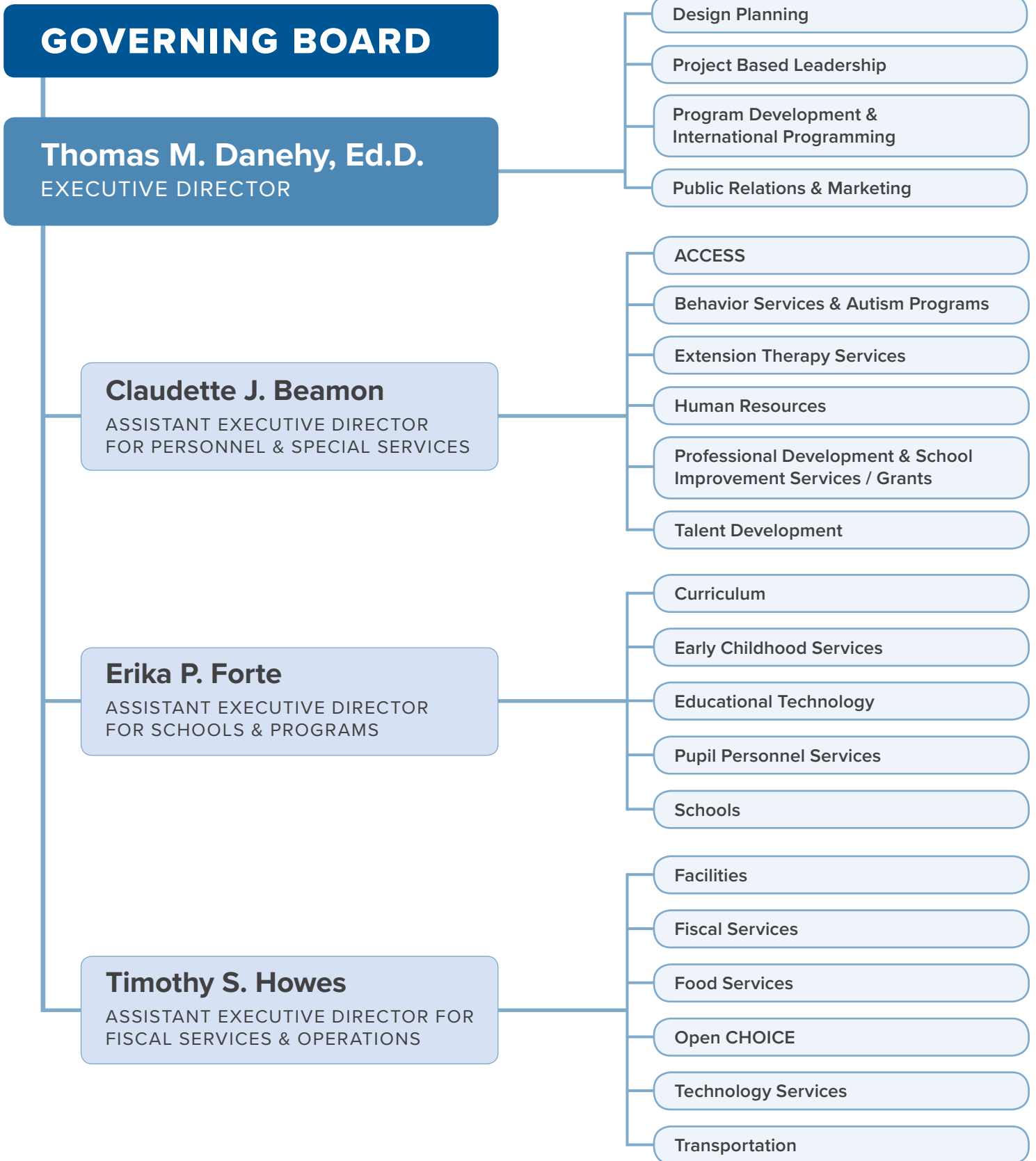
The fourth major source of support for ACES programs is federal funding through grants for educational programming. This source accounts for 1.39% of the total budget.

The final category of major revenue is from private sources in the form of grants from charitable foundations and other special contracts. These grants and “other” contracts represent approximately 1.07% of the ACES annual budget.

ACES is a member of the Connecticut Alliance of Regional Educational Service Centers and works closely with the other RESCs on collaborative projects.

ACES FUNDING SOURCES





CENTRAL ADMINISTRATION

Peter C. Young
Administration Building
 350 State Street
 North Haven, CT 06473
 (203) 498-6800
 Directions: (203) 498-6885

Executive Director
 Thomas M. Danehy, Ed.D.
 (203) 498-6817

**Assistant Executive Director,
 Personnel and Special Services**
 Claudette J. Beamon
 (203) 498-6810

**Assistant Executive Director,
 Schools and Programs**
 Erika P. Forte
 (203) 498-6815

**Assistant Executive Director,
 Finance and Operations**
 Timothy S. Howes
 (203) 498-6836

Curriculum and Instruction
 William Rice
 (203) 498-6868

Educational Technology
 Wanda Wagner, D.M.
 (203) 498-6804

Facilities
 Timothy Gunn
 (203) 498-6839

Marketing and Public Relations
 Evelyn Rossetti-Ryan, Ed.D.
 (203) 498-6881

Talent Development
 Rachel Sexton
 (203) 407-4437

SCHOOLS

**ACES Center for Autism Spectrum and
 Developmental Disorders**
 26 Old Post Road
 Northford, CT 06472
 Leslie Peters, Principal
 (203) 484-9501

ACES Educational Center for the Arts
 55 Audubon Street
 New Haven, CT 06510
 Jason Hiruo, Principal
 (203) 777-5451

ACES Mill Road School
 295 Mill Road
 North Haven, CT 06473
 Cynthia Ratchelous, Principal
 Bryan Markiewicz, Assistant Principal
 (203) 234-0303

ACES Thomas Edison Middle School
 1355 No. Broad Street
 Meriden, CT 06450
 Karen Habegger, Principal
 Megan Conatser & Todd Solli, Assistant
 Principals
 (203) 639-8403

ACES Village School
 31 Temple Street
 North Haven, CT 06473
 Virginia A. Tagliatela, Principal
 Jen Santarcangelo, Assistant Principal
 (203) 234-7611

**ACES Whitney High School East / West /
 CREATE**
 205 Skiff Street / 261 Skiff Street
 Hamden, CT 06517
 Gina Drury, Principal
 Lisa Mucciacciaro, Assistant Principal
 (203) 281-3577

ACES Whitney High School North
 205 Skiff Street
 Hamden, CT 06517
 Mark Dougherty, Principal
 (203) 407-4500

**ACES Wintergreen
 Interdistrict Magnet School**
 670 Wintergreen Avenue
 Hamden, CT 06514
 Suzanne Duran Crelin, Principal
 Vicki Rose, Assistant Principal
 (203) 281-9668

SERVICES

ACCESS
 60 United Drive
 North Haven, CT 06473
 Chidi Onukwugha
 (203) 234-1344

Behavior Services and Autism Programs
 26 Old Post Road
 Northford, CT 06472
 James A. Hoko, Ph.D., BCBA-D
 (203) 484-9501

Construction Services
 350 State Street
 North Haven, CT 06473
 Timothy Gunn
 (203) 498-6839

Early Childhood Services
 205 Skiff Street
 Hamden, CT 06517
 Alice Torres, Ed.D.
 (203) 407-4441

Extension Therapy Services
 205 Skiff Street
 Hamden, CT 06517
 Laura Evangelist
 (203) 407-4470

ACES International
 350 State Street
 North Haven, CT 06473
 Jason Hiruo
 (203) 498-6832

**Professional Development and School
 Improvement Services**
 205 Skiff Street
 Hamden, CT 06517
 Leslie Abbatiello
 (203) 407-4402

Pupil Services and Collaborative Programs
 204 State Street
 North Haven, CT 06473
 Vanessa Taragowski
 (203) 498-6849

Technology Services
 204 State Street
 North Haven, CT 06473
 Steven Manley
 (203) 287-6840

Transportation Services
 60 United Drive
 North Haven, CT 06473
 Dawn Carranzo
 (203) 234-2406

aces

**Innovators
in Education**

350 STATE STREET • NORTH HAVEN, CT 06473

(203) 498-6800 / WWW.ACES.ORG

